

Anti-NPDC1 antibody (160-240 Internal) (STJ94545)

STJ94545

GENERAL INFORMATION

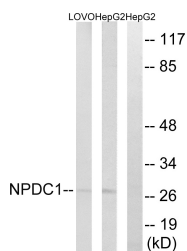
Product Type	Primary antibodies
Short Description	Rabbit polyclonal antibody anti-Neural Proliferation Differentiation And Control Protein 1 (160-240 Internal) is suitable for use in Western Blot and ELISA research applications.
Applications	WB, ELISA
Host/Source	Rabbit
Reactivity	Human, Mouse, Rat

PRODUCT PROPERTIES

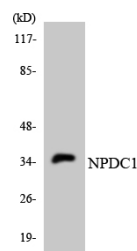
Clonality	Polyclonal
Clone ID	
Concentration	1 mg/mL
Conjugation	Unconjugated
Purification	The antibody was affinity-purified from rabbit anti-serum by affinity-chromatography.
Dilution	WB 1:500-1:2000
Range	ELISA 1:20000
Formulation	PBS, 50% Glycerol, 0.5% BSA and 0.02% Sodium Azide.
Isotype	IgG
Storage	Store at -20°C for up to 1 year from the date of receipt, and avoid repeat freeze-thaw cycles.
Instruction	

TARGET INFORMATION

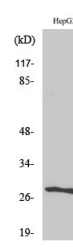
Gene ID	56654
Gene Symbol	NPDC1
Uniprot ID	NPDC1_HUMAN
Immunogen	The antiserum was produced against synthesized peptide derived from human NPDC1 at amino acid range 189-238
Immunogen Region	160-240 Internal
Specificity	NPDC1 polyclonal antibody (Neural Proliferation Differentiation And Control Protein 1) binds to endogenous Neural Proliferation Differentiation And Control Protein 1 at the amino acid region 160-240 Internal.
Immunogen Sequence	



Western blot analysis of lysates from HepG2 and LOVO cells, using NPDC1 Antibody. The lane on the right is blocked with the synthesized peptide.



Western blot analysis of the lysates from K562 cells using NPDC1 antibody.



Western blot analysis of various cells using NPDC-1 Polyclonal Antibody.