

## Anti-ZNF638 antibody (1240-1320 Internal) (STJ94542)

STJ94542

### GENERAL INFORMATION

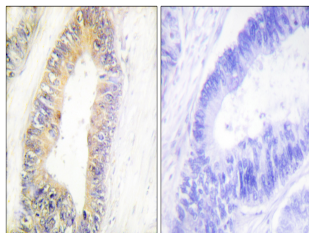
<b>Product Type</b>	Primary antibodies
<b>Short Description</b>	Rabbit polyclonal antibody anti-Zinc Finger Protein 638 (1240-1320 Internal) is suitable for use in Western Blot, Immunohistochemistry, Immunofluorescence and ELISA research applications.
<b>Applications</b>	WB, IHC-P, IF-P, ELISA
<b>Host/Source</b>	Rabbit
<b>Reactivity</b>	Human, Rat, Mouse

### PRODUCT PROPERTIES

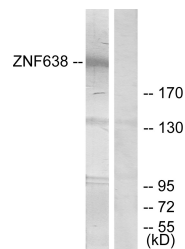
<b>Clonality</b>	Polyclonal
<b>Clone ID</b>	
<b>Concentration</b>	1 mg/mL
<b>Conjugation</b>	Unconjugated
<b>Purification</b>	The antibody was affinity-purified from rabbit anti-serum by affinity-chromatography.
<b>Dilution Range</b>	WB 1:500-1:2000 IHC 1:100-1:300 ELISA 1:20000
<b>Formulation</b>	PBS, 50% Glycerol, 0.5% BSA and 0.02% Sodium Azide.
<b>Isotype</b>	IgG
<b>Storage Instruction</b>	Store at -20°C for up to 1 year from the date of receipt, and avoid repeat freeze-thaw cycles.

### TARGET INFORMATION

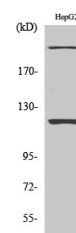
<b>Gene ID</b>	<a href="#">27332</a>
<b>Gene Symbol</b>	<a href="#">ZNF638</a>
<b>Uniprot ID</b>	<a href="#">ZNF638_HUMAN</a>
<b>Immunogen</b>	The antiserum was produced against synthesized peptide derived from human ZNF638 at amino acid range 1271-1320
<b>Immunogen Region</b>	1240-1320 Internal
<b>Specificity</b>	ZNF638 polyclonal antibody (Zinc Finger Protein 638) binds to endogenous Zinc Finger Protein 638 at the amino acid region 1240-1320 Internal.
<b>Immunogen Sequence</b>	



Immunohistochemistry analysis of paraffin-embedded human colon carcinoma tissue, using ZNF638 Antibody. The picture on the right is blocked with the synthesized peptide.



Western blot analysis of lysates from HepG2 cells, treated with serum 20% 15', using ZNF638 Antibody. The lane on the right is blocked with the synthesized peptide.



Western blot analysis of various cells using NP220 Polyclonal Antibody