

Anti-NOLC1 antibody (620-700 C-Term) (STJ94531)

STJ94531

GENERAL INFORMATION

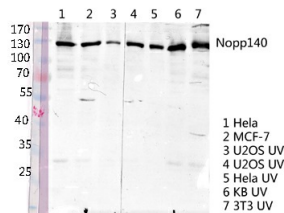
| | |
|--------------------------|--|
| Product Type | Primary antibodies |
| Short Description | Rabbit polyclonal antibody anti-Nucleolar And Coiled-Body Phosphoprotein 1 (620-700 C-Term) is suitable for use in Western Blot and ELISA research applications. |
| Applications | WB, ELISA |
| Host/Source | Rabbit |
| Reactivity | Human, Mouse, Rat |

PRODUCT PROPERTIES

| | |
|----------------------------|--|
| Clonality | Polyclonal |
| Clone ID | |
| Concentration | 1 mg/mL |
| Conjugation | Unconjugated |
| Purification | The antibody was affinity-purified from rabbit anti-serum by affinity-chromatography. |
| Dilution Range | WB 1:500-1:2000 ELISA 1:40000 |
| Formulation | PBS, 50% Glycerol, 0.5% BSA and 0.02% Sodium Azide. |
| Isotype | IgG |
| Storage Instruction | Store at -20°C for up to 1 year from the date of receipt, and avoid repeat freeze-thaw cycles. |

TARGET INFORMATION

| | |
|---------------------------|--|
| Gene ID | 9221 |
| Gene Symbol | NOLC1 |
| Uniprot ID | NOLC1_HUMAN |
| Immunogen | Synthesized peptide derived from Nopp140. at amino acid range: 620-700 |
| Immunogen Region | 620-700 C-Term |
| Specificity | NOLC1 polyclonal antibody (Nucleolar And Coiled-Body Phosphoprotein 1) binds to endogenous Nucleolar And Coiled-Body Phosphoprotein 1 at the amino acid region 620-700 C-Term. |
| Immunogen Sequence | |



Western blot analysis of various lysis using Nopp140 Polyclonal Antibody diluted at 1: 2000. Secondary antibody was diluted at 1:20000