

Anti-NOL8 antibody (1110-1190 C-Term) (STJ94530)

STJ94530

GENERAL INFORMATION

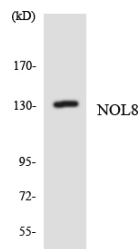
Product Type	Primary antibodies
Short Description	Rabbit polyclonal antibody anti-Nucleolar Protein 8 (1110-1190 C-Term) is suitable for use in Western Blot, Immunohistochemistry, Immunofluorescence and ELISA research applications.
Applications	WB, IHC-P, IF-P, ELISA
Host/Source	Rabbit
Reactivity	Human, Rat, Mouse

PRODUCT PROPERTIES

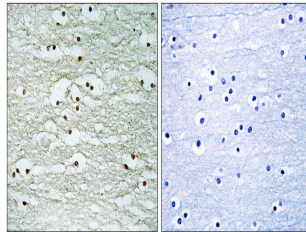
Clonality	Polyclonal
Clone ID	
Concentration	1 mg/mL
Conjugation	Unconjugated
Purification	The antibody was affinity-purified from rabbit anti-serum by affinity-chromatography.
Dilution Range	WB 1:500-1:2000 IHC 1:100-1:300 ELISA 1:20000
Formulation	PBS, 50% Glycerol, 0.5% BSA and 0.02% Sodium Azide.
Isotype	IgG
Storage Instruction	Store at -20°C for up to 1 year from the date of receipt, and avoid repeat freeze-thaw cycles.

TARGET INFORMATION

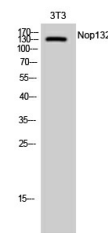
Gene ID	55035
Gene Symbol	NOL8
Uniprot ID	NOL8_HUMAN
Immunogen	The antiserum was produced against synthesized peptide derived from human NOL8 at amino acid range 1118-1167
Immunogen Region	1110-1190 C-Term
Specificity	NOL8 polyclonal antibody (Nucleolar Protein 8) binds to endogenous Nucleolar Protein 8 at the amino acid region 1110-1190 C-Term.
Immunogen Sequence	



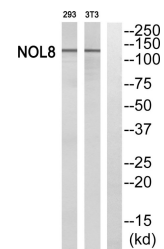
Western blot analysis of the lysates from HepG2 cells using NOL8 antibody.



Immunohistochemistry analysis of paraffin-embedded human brain, using NOL8 Antibody. The lane on the right is blocked with the NOL8 peptide.



Western blot analysis of NIH-3T3 cells using Nop132 Polyclonal Antibody diluted at 1:1000 cells nucleus extracted by Minute TM Cytoplasmic and Nuclear Fractionation kit (SC-003, Inventiotech, MN, USA).



Western blot analysis of NOL8 Antibody. The lane on the right is blocked with the NOL8 peptide.

This product is suitable for in-vitro studies under the RESEARCH USE ONLY [RUO] licence. This product must not be used as for diagnostic or other medical purposes.
St John's Laboratory Ltd, Knowledge Dock Business Centre, University Way, London, E16 2RD | Tel: 0208 223 3081