

Anti-GRIN2D antibody (640-720 Internal) (STJ94520)

STJ94520

GENERAL INFORMATION

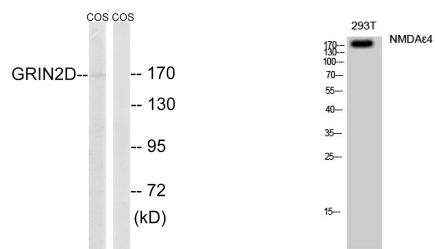
Product Type	Primary antibodies
Short Description	Rabbit polyclonal antibody anti-Glutamate Receptor Ionotropic-Nmda 2d (640-720 Internal) is suitable for use in Western Blot and ELISA research applications.
Applications	WB, ELISA
Host/Source	Rabbit
Reactivity	Human, Mouse, Rat, Monkey

PRODUCT PROPERTIES

Clonality	Polyclonal
Clone ID	
Concentration	1 mg/mL
Conjugation	Unconjugated
Purification	The antibody was affinity-purified from rabbit anti-serum by affinity-chromatography.
Dilution Range	WB 1:500-1:2000 ELISA 1:40000
Formulation	PBS, 50% Glycerol, 0.5% BSA and 0.02% Sodium Azide.
Isotype	IgG
Storage	Store at -20°C for up to 1 year from the date of receipt, and avoid repeat freeze-thaw cycles.
Instruction	

TARGET INFORMATION

Gene ID	2906
Gene Symbol	GRIN2D
Uniprot ID	NMDE4_HUMAN
Immunogen	The antiserum was produced against synthesized peptide derived from human GRIN2D at amino acid range 671-720
Immunogen Region	640-720 Internal
Specificity	GRIN2D polyclonal antibody (Glutamate Receptor Ionotropic-Nmda 2d) binds to endogenous Glutamate Receptor Ionotropic-Nmda 2d at the amino acid region 640-720 Internal.
Immunogen Sequence	



Western blot analysis of lysates from COS7 cells, using GRIN2D Antibody. The lane on the right is blocked with the synthesized peptide.

Western blot analysis of 293T cells using NMDA Epsilon 4 Polyclonal Antibody diluted at 1 : 500