

Anti-GRIN2B antibody (1410-1490) (STJ94517)

STJ94517

GENERAL INFORMATION

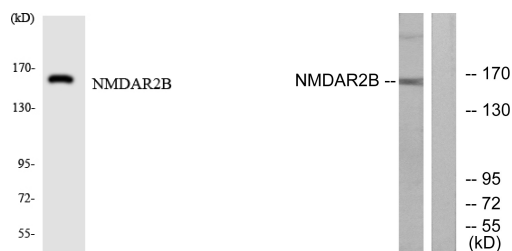
Product Type	Primary antibodies
Short Description	Rabbit polyclonal antibody anti-Glutamate Receptor Ionotropic-Nmda 2b (1410-1490) is suitable for use in Western Blot, Immunohistochemistry, Immunofluorescence and ELISA research applications.
Applications	WB, IHC-P, IF-P, ELISA
Host/Source	Rabbit
Reactivity	Human, Mouse, Rat

PRODUCT PROPERTIES

Clonality	Polyclonal
Clone ID	
Concentration	1 mg/mL
Conjugation	Unconjugated
Purification	The antibody was affinity-purified from rabbit anti-serum by affinity-chromatography.
Dilution Range	WB 1:500-1:2000 IHC 1:100-1:300 ELISA 1:5000
Formulation	PBS, 50% Glycerol, 0.5% BSA and 0.02% Sodium Azide.
Isotype	IgG
Storage Instruction	Store at -20°C for up to 1 year from the date of receipt, and avoid repeat freeze-thaw cycles.

TARGET INFORMATION

Gene ID	2904
Gene Symbol	GRIN2B
Uniprot ID	NMDE2_HUMAN
Immunogen Region	The antiserum was produced against synthesized peptide derived from human NMDAR2B at amino acid range 1435-1484
Immunogen Region	1410-1490
Specificity	GRIN2B polyclonal antibody (Glutamate Receptor Ionotropic-Nmda 2b) binds to endogenous Glutamate Receptor Ionotropic-Nmda 2b at the amino acid region 1410-1490.
Immunogen Sequence	



Western blot analysis of the lysates from HUVE cells using NMDAR2B antibody.

Western blot analysis of lysates from Jurkat cells, using NMDAR2B Antibody. The lane on the right is blocked with the synthesized peptide.

This product is suitable for in-vitro studies under the RESEARCH USE ONLY [RUO] licence. This product must not be used as for diagnostic or other medical purposes.
St John's Laboratory Ltd, Knowledge Dock Business Centre, University Way, London, E16 2RD | Tel: 0208 223 3081