

Anti-NKTR antibody (760-840 Internal) (STJ94502)

STJ94502

GENERAL INFORMATION

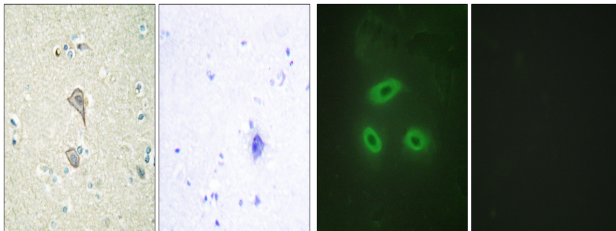
Product Type	Primary antibodies
Short Description	Rabbit polyclonal antibody anti-Nk-Tumor Recognition Protein (760-840 Internal) is suitable for use in Immunohistochemistry, Immunofluorescence, Immunocytochemistry, Western Blot and ELISA research applications.
Applications	IHC-P, IF, ICC, WB, ELISA
Host/Source	Rabbit
Reactivity	Human, Rat, Mouse

PRODUCT PROPERTIES

Clonality	Polyclonal
Clone ID	
Concentration	1 mg/mL
Conjugation	Unconjugated
Purification	The antibody was affinity-purified from rabbit anti-serum by affinity-chromatography.
Dilution Range	WB 1:500-2000 IHC 1:100-1:300 IF 1:200-1:1000 ELISA 1:40000
Formulation	PBS, 50% Glycerol, 0.5% BSA and 0.02% Sodium Azide.
Isotype	IgG
Storage Instruction	Store at -20°C for up to 1 year from the date of receipt, and avoid repeat freeze-thaw cycles.

TARGET INFORMATION

Gene ID	4820
Gene Symbol	NKTR
Uniprot ID	NKTR_HUMAN
Immunogen	The antiserum was produced against synthesized peptide derived from human NKTR at amino acid range 784-833
Immunogen Region	760-840 Internal
Specificity	NKTR polyclonal antibody (Nk-Tumor Recognition Protein) binds to endogenous Nk-Tumor Recognition Protein at the amino acid region 760-840 Internal.
Immunogen Sequence	



Immunohistochemistry analysis of paraffin-embedded human brain tissue, using NKTR Antibody. The picture on the right is blocked with the synthesized peptide.

Immunofluorescence analysis of HeLa cells, using NKTR Antibody. The picture on the right is blocked with the synthesized peptide.

This product is suitable for in-vitro studies under the RESEARCH USE ONLY [RUO] licence. This product must not be used as for diagnostic or other medical purposes.
St John's Laboratory Ltd, Knowledge Dock Business Centre, University Way, London, E16 2RD | Tel: 0208 223 3081