

Anti-NCR3 antibody (80-160 Internal) (STJ94500)

STJ94500

GENERAL INFORMATION

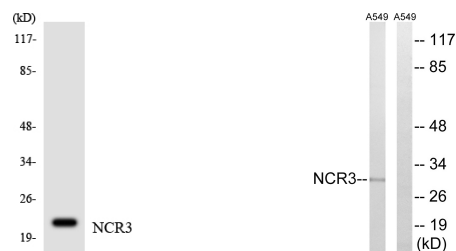
Product Type	Primary antibodies
Short Description	Rabbit polyclonal antibody anti-Natural Cytotoxicity Triggering Receptor 3 (80-160 Internal) is suitable for use in Western Blot and ELISA research applications.
Applications	WB, ELISA
Host/Source	Rabbit
Reactivity	Human, Rat

PRODUCT PROPERTIES

Clonality	Polyclonal
Clone ID	
Concentration	1 mg/mL
Conjugation	Unconjugated
Purification	The antibody was affinity-purified from rabbit anti-serum by affinity-chromatography.
Dilution Range	WB 1:500-1:2000 ELISA 1:40000
Formulation	PBS, 50% Glycerol, 0.5% BSA and 0.02% Sodium Azide.
Isotype	IgG
Storage	Store at -20°C for up to 1 year from the date of receipt, and avoid repeat freeze-thaw cycles.
Instruction	

TARGET INFORMATION

Gene ID	259197
Gene Symbol	NCR3
Uniprot ID	NCTR3_HUMAN
Immunogen	The antiserum was produced against synthesized peptide derived from human NCR3 at amino acid range 104-153
Immunogen Region	80-160 Internal
Specificity	NCR3 polyclonal antibody (Natural Cytotoxicity Triggering Receptor 3) binds to endogenous Natural Cytotoxicity Triggering Receptor 3 at the amino acid region 80-160 Internal.
Immunogen Sequence	



Western blot analysis of the lysates from K562 cells using NCR3 antibody.

Western blot analysis of lysates from A549 cells, using NCR3 Antibody. The lane on the right is blocked with the synthesized peptide.