

Anti-CDKL3 antibody (260-340 Internal) (STJ94499)

STJ94499

GENERAL INFORMATION

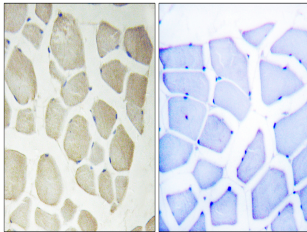
Product Type	Primary antibodies
Short Description	Rabbit polyclonal antibody anti-Cyclin-Dependent Kinase-Like 3 (260-340 Internal) is suitable for use in Immunohistochemistry, Immunofluorescence, Western Blot and ELISA research applications.
Applications	IHC-P, IF-P, WB, ELISA
Host/Source	Rabbit
Reactivity	Human, Rat, Mouse

PRODUCT PROPERTIES

Clonality	Polyclonal
Clone ID	
Concentration	1 mg/mL
Conjugation	Unconjugated
Purification	The antibody was affinity-purified from rabbit anti-serum by affinity-chromatography.
Dilution Range	WB 1:500-2000 IHC 1:100-1:300 ELISA 1:5000
Formulation	PBS, 50% Glycerol, 0.5% BSA and 0.02% Sodium Azide.
Isotype	IgG
Storage Instruction	Store at -20°C for up to 1 year from the date of receipt, and avoid repeat freeze-thaw cycles.

TARGET INFORMATION

Gene ID	51265
Gene Symbol	CDKL3
Uniprot ID	CDKL3_HUMAN
Immunogen	The antiserum was produced against synthesized peptide derived from human CDKL3 at amino acid range 291-340
Immunogen Region	260-340 Internal
Specificity	CDKL3 polyclonal antibody (Cyclin-Dependent Kinase-Like 3) binds to endogenous Cyclin-Dependent Kinase-Like 3 at the amino acid region 260-340 Internal.
Immunogen Sequence	



Immunohistochemistry analysis of paraffin-embedded human skeletal muscle, using CDKL3 Antibody. The picture on the right is blocked with the synthesized peptide.