

Anti-TACR3 antibody (370-450 C-Term) (STJ94498)

STJ94498

GENERAL INFORMATION

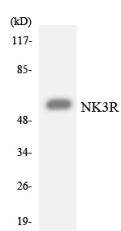
Product Type	Primary antibodies
Short Description	Rabbit polyclonal antibody anti-Neuromedin-K Receptor (370-450 C-Term) is suitable for use in Western Blot, Immunofluorescence, Immunocytochemistry and ELISA research applications.
Applications	WB, IF, ICC, ELISA
Host/Source	Rabbit
Reactivity	Human, Mouse, Rat

PRODUCT PROPERTIES

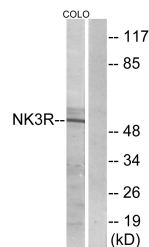
Clonality	Polyclonal
Clone ID	
Concentration	1 mg/mL
Conjugation	Unconjugated
Purification	The antibody was affinity-purified from rabbit anti-serum by affinity-chromatography.
Dilution Range	WB 1:500-1:2000 IF 1:200-1:1000 ELISA 1:10000
Formulation	PBS, 50% Glycerol, 0.5% BSA and 0.02% Sodium Azide.
Isotype	IgG
Storage Instruction	Store at -20°C for up to 1 year from the date of receipt, and avoid repeat freeze-thaw cycles.

TARGET INFORMATION

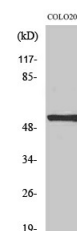
Gene ID	6870
Gene Symbol	TACR3
Uniprot ID	NK3R_HUMAN
Immunogen	The antiserum was produced against synthesized peptide derived from human NK3R at amino acid range 401-450
Immunogen Region	370-450 C-Term
Specificity	TACR3 polyclonal antibody (Neuromedin-K Receptor) binds to endogenous Neuromedin-K Receptor at the amino acid region 370-450 C-Term.
Immunogen Sequence	



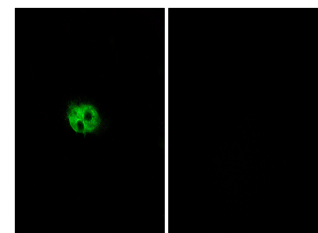
Western blot analysis of the lysates from HepG2 cells using NK3R antibody.



Western blot analysis of lysates from COLO205 cells, using NK3R Antibody. The lane on the right is blocked with the synthesized peptide.



Western blot analysis of COLO205 cells using NK-3R Polyclonal Antibody cells nucleus extracted by Minute TM Cytoplasmic and Nuclear Fractionation kit (SC-003, Inventorlab, MN, USA).



Immunofluorescence analysis of A549 cells, using NK3R Antibody. The picture on the right is blocked with the synthesized peptide.

This product is suitable for in-vitro studies under the RESEARCH USE ONLY [RUO] licence. This product must not be used as for diagnostic or other medical purposes.
St John's Laboratory Ltd, Knowledge Dock Business Centre, University Way, London, E16 2RD | Tel: 0208 223 3081