

Anti-PPP1R8 antibody (170-250 Internal) (STJ94495)

STJ94495

GENERAL INFORMATION

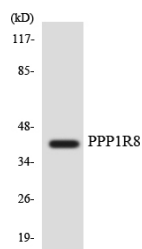
Product Type	Primary antibodies
Short Description	Rabbit polyclonal antibody anti-Nuclear Inhibitor Of Protein Phosphatase 1 (170-250 Internal) is suitable for use in Western Blot and ELISA research applications.
Applications	WB, ELISA
Host/Source	Rabbit
Reactivity	Human, Mouse, Rat

PRODUCT PROPERTIES

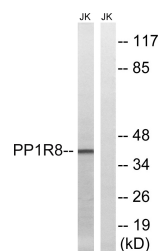
Clonality	Polyclonal
Clone ID	
Concentration	1 mg/mL
Conjugation	Unconjugated
Purification	The antibody was affinity-purified from rabbit anti-serum by affinity-chromatography.
Dilution Range	WB 1:500-1:2000 ELISA 1:20000
Formulation	PBS, 50% Glycerol, 0.5% BSA and 0.02% Sodium Azide.
Isotype	IgG
Storage Instruction	Store at -20°C for up to 1 year from the date of receipt, and avoid repeat freeze-thaw cycles.

TARGET INFORMATION

Gene ID	5511
Gene Symbol	PPP1R8
Uniprot ID	PP1R8_HUMAN
Immunogen	The antiserum was produced against synthesized peptide derived from human PPP1R8 at amino acid range 196-245
Immunogen Region	170-250 Internal
Specificity	PPP1R8 polyclonal antibody (Nuclear Inhibitor Of Protein Phosphatase 1) binds to endogenous Nuclear Inhibitor Of Protein Phosphatase 1 at the amino acid region 170-250 Internal.
Immunogen Sequence	



Western blot analysis of the lysates from HUVEC cells using PPP1R8 antibody.



Western blot analysis of lysates from Jurkat cells, using PPP1R8 Antibody. The lane on the right is blocked with the synthesized peptide.

This product is suitable for in-vitro studies under the RESEARCH USE ONLY [RUO] licence. This product must not be used as for diagnostic or other medical purposes.
St John's Laboratory Ltd, Knowledge Dock Business Centre, University Way, London, E16 2RD | Tel: 0208 223 3081