

Anti-NIM1K antibody (320-400 C-Term) (STJ94493)

STJ94493

GENERAL INFORMATION

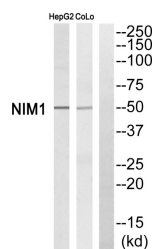
Product Type	Primary antibodies
Short Description	Rabbit polyclonal antibody anti-Serine/Threonine-Protein Kinase Nim1 (320-400 C-Term) is suitable for use in Western Blot and ELISA research applications.
Applications	WB, ELISA
Host/Source	Rabbit
Reactivity	Human, Mouse

PRODUCT PROPERTIES

Clonality	Polyclonal
Clone ID	
Concentration	1 mg/mL
Conjugation	Unconjugated
Purification	The antibody was affinity-purified from rabbit anti-serum by affinity-chromatography.
Dilution Range	WB 1:500-1:2000 ELISA 1:10000
Formulation	PBS, 50% Glycerol, 0.5% BSA and 0.02% Sodium Azide.
Isotype	IgG
Storage Instruction	Store at -20°C for up to 1 year from the date of receipt, and avoid repeat freeze-thaw cycles.

TARGET INFORMATION

Gene ID	167359
Gene Symbol	NIM1K
Uniprot ID	NIM1_HUMAN
Immunogen	The antiserum was produced against synthesized peptide derived from human NIM1 at amino acid range 347-396
Immunogen Region	320-400 C-Term
Specificity	NIM1K polyclonal antibody (Serine/Threonine-Protein Kinase Nim1) binds to endogenous Serine/Threonine-Protein Kinase Nim1 at the amino acid region 320-400 C-Term.
Immunogen Sequence	



Western blot analysis of NIM1 Antibody. The lane on the right is blocked with the NIM1 peptide.

This product is suitable for in-vitro studies under the RESEARCH USE ONLY [RUO] licence. This product must not be used as for diagnostic or other medical purposes.
St John's Laboratory Ltd, Knowledge Dock Business Centre, University Way, London, E16 2RD | Tel: 0208 223 3081