

Anti-UBAP2L antibody (530-610 Internal) (STJ94490)

STJ94490

GENERAL INFORMATION

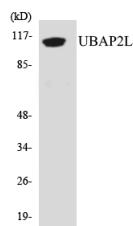
Product Type	Primary antibodies
Short Description	Rabbit polyclonal antibody anti-Ubiquitin-Associated Protein 2-Like (530-610 Internal) is suitable for use in Western Blot and ELISA research applications.
Applications	WB, ELISA
Host/Source	Rabbit
Reactivity	Human, Mouse

PRODUCT PROPERTIES

Clonality	Polyclonal
Clone ID	
Concentration	1 mg/mL
Conjugation	Unconjugated
Purification	The antibody was affinity-purified from rabbit anti-serum by affinity-chromatography.
Dilution Range	WB 1:500-1:2000 ELISA 1:20000
Formulation	PBS, 50% Glycerol, 0.5% BSA and 0.02% Sodium Azide.
Isotype	IgG
Storage Instruction	Store at -20°C for up to 1 year from the date of receipt, and avoid repeat freeze-thaw cycles.

TARGET INFORMATION

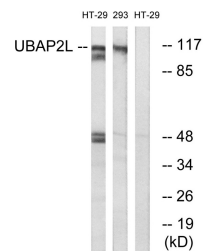
Gene ID	9898
Gene Symbol	UBAP2L
Uniprot ID	UBP2L_HUMAN
Immunogen	The antiserum was produced against synthesized peptide derived from human UBAP2L at amino acid range 561-610
Immunogen Region	530-610 Internal
Specificity	UBAP2L polyclonal antibody (Ubiquitin-Associated Protein 2-Like) binds to endogenous Ubiquitin-Associated Protein 2-Like at the amino acid region 530-610 Internal.
Immunogen Sequence	



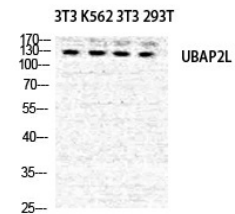
Western blot analysis of the lysates from Jurkat cells using UBAP2L antibody.



Western blot analysis of HEPG2 using NICE4 Polyclonal Antibody diluted at 1: 500



Western blot analysis of lysates from HT-29 and 293 cells, using UBAP2L Antibody. The lane on the right is blocked with the synthesized peptide.



Western blot analysis of NIH-3T3 K562 NIH-3T3 293T cells using NICE4 Polyclonal Antibody diluted at 1: 500

This product is suitable for in-vitro studies under the RESEARCH USE ONLY [RUO] licence. This product must not be used as for diagnostic or other medical purposes.
St John's Laboratory Ltd, Knowledge Dock Business Centre, University Way, London, E16 2RD | Tel: 0208 223 3081