

Anti-NBN antibody (220-300) (STJ94486)

STJ94486

GENERAL INFORMATION

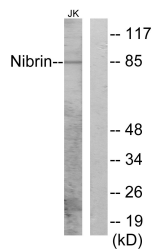
Product Type	Primary antibodies
Short Description	Rabbit polyclonal antibody anti-Nibrin (220-300) is suitable for use in Western Blot, Immunohistochemistry, Immunofluorescence, Immunocytochemistry and ELISA research applications.
Applications	WB, IHC-P, IF, ICC, ELISA
Host/Source	Rabbit
Reactivity	Human, Rat, Mouse

PRODUCT PROPERTIES

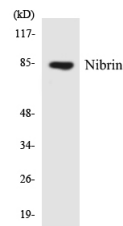
Clonality	Polyclonal
Clone ID	
Concentration	1 mg/mL
Conjugation	Unconjugated
Purification	The antibody was affinity-purified from rabbit anti-serum by affinity-chromatography.
Dilution Range	WB 1:500-1:2000 IHC 1:100-1:300 IF 1:200-1:1000 ELISA 1:10000
Formulation	PBS, 50% Glycerol, 0.5% BSA and 0.02% Sodium Azide.
Isotype	IgG
Storage Instruction	Store at -20°C for up to 1 year from the date of receipt, and avoid repeat freeze-thaw cycles.

TARGET INFORMATION

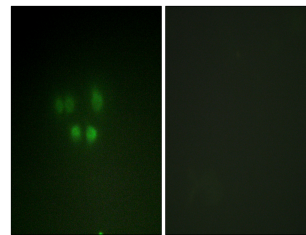
Gene ID	4683
Gene Symbol	NBN
Uniprot ID	NBN_HUMAN
Immunogen	The antiserum was produced against synthesized peptide derived from human Nibrin at amino acid range 251-300
Immunogen Region	220-300
Specificity	NBN polyclonal antibody (Nibrin) binds to endogenous Nibrin at the amino acid region 220-300.
Immunogen Sequence	



Western blot analysis of lysates from Jurkat cells, using Nibrin Antibody. The lane on the right is blocked with the synthesized peptide.



Western blot analysis of the lysates from K562 cells using Nibrin antibody.



Immunofluorescence analysis of A549 cells, using Nibrin Antibody. The picture on the right is blocked with the synthesized peptide.