

Anti-SLC9A9 antibody (140-220 Internal) (STJ94485)

STJ94485

GENERAL INFORMATION

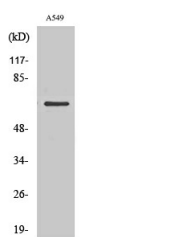
Product Type	Primary antibodies
Short Description	Rabbit polyclonal antibody anti-Sodium/Hydrogen Exchanger 9 (140-220 Internal) is suitable for use in Western Blot and ELISA research applications.
Applications	WB, ELISA
Host/Source	Rabbit
Reactivity	Human, Mouse

PRODUCT PROPERTIES

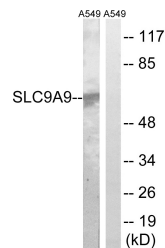
Clonality	Polyclonal
Clone ID	
Concentration	1 mg/mL
Conjugation	Unconjugated
Purification	The antibody was affinity-purified from rabbit anti-serum by affinity-chromatography.
Dilution Range	WB 1:500-1:2000 ELISA 1:40000
Formulation	PBS, 50% Glycerol, 0.5% BSA and 0.02% Sodium Azide.
Isotype	IgG
Storage	Store at -20°C for up to 1 year from the date of receipt, and avoid repeat freeze-thaw cycles.
Instruction	

TARGET INFORMATION

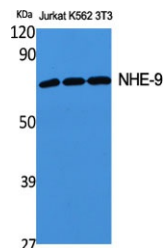
Gene ID	285195
Gene Symbol	SLC9A9
Uniprot ID	SL9A9_HUMAN
Immunogen	The antiserum was produced against synthesized peptide derived from human SLC9A9 at amino acid range 171-220
Immunogen Region	140-220 Internal
Specificity	SLC9A9 polyclonal antibody (Sodium/Hydrogen Exchanger 9) binds to endogenous Sodium/Hydrogen Exchanger 9 at the amino acid region 140-220 Internal.
Immunogen Sequence	



Western blot analysis of RAW264.7 cells using NHE-9 Polyclonal Antibody



Western blot analysis of lysates from A549 cells, using SLC9A9 Antibody. The lane on the right is blocked with the synthesized peptide.



Western blot analysis of various cells using NHE-9 Polyclonal Antibody

This product is suitable for in-vitro studies under the RESEARCH USE ONLY [RUO] licence. This product must not be used as for diagnostic or other medical purposes.
St John's Laboratory Ltd, Knowledge Dock Business Centre, University Way, London, E16 2RD | Tel: 0208 223 3081