

Anti-SLC9A8 antibody (420-500 C-Term) (STJ94484)

STJ94484

GENERAL INFORMATION

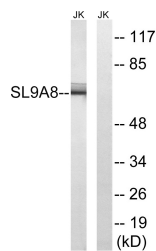
Product Type	Primary antibodies
Short Description	Rabbit polyclonal antibody anti-Sodium/Hydrogen Exchanger 8 (420-500 C-Term) is suitable for use in Western Blot, Immunohistochemistry, Immunofluorescence and ELISA research applications.
Applications	WB, IHC-P, IF-P, ELISA
Host/Source	Rabbit
Reactivity	Human, Mouse, Rat

PRODUCT PROPERTIES

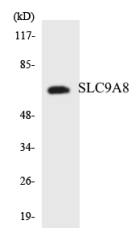
Clonality	Polyclonal
Clone ID	
Concentration	1 mg/mL
Conjugation	Unconjugated
Purification	The antibody was affinity-purified from rabbit anti-serum by affinity-chromatography.
Dilution Range	WB 1:500-1:2000 IHC1:50-300 ELISA 1:20000
Formulation	PBS, 50% Glycerol, 0.5% BSA and 0.02% Sodium Azide.
Isotype	IgG
Storage Instruction	Store at -20°C for up to 1 year from the date of receipt, and avoid repeat freeze-thaw cycles.

TARGET INFORMATION

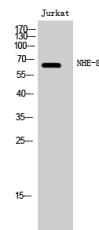
Gene ID	23315
Gene Symbol	SLC9A8
Uniprot ID	SL9A8_HUMAN
Immunogen	The antiserum was produced against synthesized peptide derived from human SLC9A8 at amino acid range 451-500
Immunogen Region	420-500 C-Term
Specificity	SLC9A8 polyclonal antibody (Sodium/Hydrogen Exchanger 8) binds to endogenous Sodium/Hydrogen Exchanger 8 at the amino acid region 420-500 C-Term.
Immunogen Sequence	



Western blot analysis of lysates from Jurkat cells, using SLC9A8 Antibody. The lane on the right is blocked with the synthesized peptide.



Western blot analysis of the lysates from HeLa cells using SLC9A8 antibody.



Western blot analysis of Jurkat cells using NHE-8 Polyclonal Antibody

This product is suitable for in-vitro studies under the RESEARCH USE ONLY [RUO] licence. This product must not be used as for diagnostic or other medical purposes.
 St John's Laboratory Ltd, Knowledge Dock Business Centre, University Way, London, E16 2RD | Tel: 0208 223 3081