

Anti-SLC9A7 antibody (500-580 C-Term) (STJ94483)

STJ94483

GENERAL INFORMATION

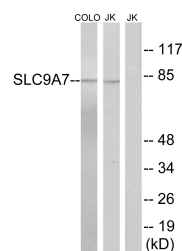
Product Type	Primary antibodies
Short Description	Rabbit polyclonal antibody anti-Sodium/Hydrogen Exchanger 7 (500-580 C-Term) is suitable for use in Western Blot and ELISA research applications.
Applications	WB, ELISA
Host/Source	Rabbit
Reactivity	Human, Mouse, Rat

PRODUCT PROPERTIES

Clonality	Polyclonal
Clone ID	
Concentration	1 mg/mL
Conjugation	Unconjugated
Purification	The antibody was affinity-purified from rabbit anti-serum by affinity-chromatography.
Dilution Range	WB 1:500-1:2000 ELISA 1:10000
Formulation	PBS, 50% Glycerol, 0.5% BSA and 0.02% Sodium Azide.
Isotype	IgG
Storage	Store at -20°C for up to 1 year from the date of receipt, and avoid repeat freeze-thaw cycles.
Instruction	

TARGET INFORMATION

Gene ID	84679
Gene Symbol	SLC9A7
Uniprot ID	SL9A7_HUMAN
Immunogen	The antiserum was produced against synthesized peptide derived from human SLC9A7 at amino acid range 531-580
Immunogen Region	500-580 C-Term
Specificity	SLC9A7 polyclonal antibody (Sodium/Hydrogen Exchanger 7) binds to endogenous Sodium/Hydrogen Exchanger 7 at the amino acid region 500-580 C-Term.
Immunogen Sequence	



Western blot analysis of lysates from Jurkat and COLO cells, using SLC9A7 Antibody. The lane on the right is blocked with the synthesized peptide.