

Anti-SLC9A6 antibody (520-600 Internal) (STJ94482)

STJ94482

GENERAL INFORMATION

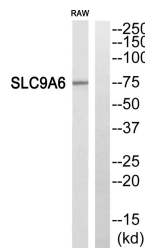
| | |
|--------------------------|---|
| Product Type | Primary antibodies |
| Short Description | Rabbit polyclonal antibody anti-Sodium/Hydrogen Exchanger 6 (520-600 Internal) is suitable for use in Western Blot and ELISA research applications. |
| Applications | WB, ELISA |
| Host/Source | Rabbit |
| Reactivity | Human, Mouse |

PRODUCT PROPERTIES

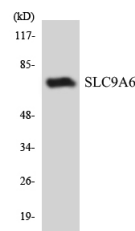
| | |
|-----------------------|--|
| Clonality | Polyclonal |
| Clone ID | |
| Concentration | 1 mg/mL |
| Conjugation | Unconjugated |
| Purification | The antibody was affinity-purified from rabbit anti-serum by affinity-chromatography. |
| Dilution Range | WB 1:500-1:2000 ELISA 1:40000 |
| Formulation | PBS, 50% Glycerol, 0.5% BSA and 0.02% Sodium Azide. |
| Isotype | IgG |
| Storage | Store at -20°C for up to 1 year from the date of receipt, and avoid repeat freeze-thaw cycles. |
| Instruction | |

TARGET INFORMATION

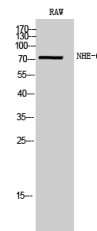
| | |
|---------------------------|---|
| Gene ID | 10479 |
| Gene Symbol | SLC9A6 |
| Uniprot ID | SL9A6_HUMAN |
| Immunogen | The antiserum was produced against synthesized peptide derived from human SLC9A6 at amino acid range 551-600 |
| Immunogen Region | 520-600 Internal |
| Specificity | SLC9A6 polyclonal antibody (Sodium/Hydrogen Exchanger 6) binds to endogenous Sodium/Hydrogen Exchanger 6 at the amino acid region 520-600 Internal. |
| Immunogen Sequence | |



Western blot analysis of SLC9A6 Antibody. The lane on the right is blocked with the SLC9A6 peptide.



Western blot analysis of the lysates from COLO205 cells using SLC9A6 antibody.



Western blot analysis of RAW cells using NHE-6 Polyclonal Antibody

This product is suitable for in-vitro studies under the RESEARCH USE ONLY [RUO] licence. This product must not be used as for diagnostic or other medical purposes.
St John's Laboratory Ltd, Knowledge Dock Business Centre, University Way, London, E16 2RD | Tel: 0208 223 3081