

Anti-NGFR antibody (90-170 Internal) (STJ94481)

STJ94481

GENERAL INFORMATION

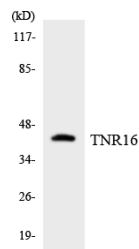
Product Type	Primary antibodies
Short Description	Rabbit polyclonal antibody anti-Tumor Necrosis Factor Receptor Superfamily Member 16 (90-170 Internal) is suitable for use in Western Blot, Immunofluorescence, Immunocytochemistry and ELISA research applications.
Applications	WB, IF, ICC, ELISA
Host/Source	Rabbit
Reactivity	Human, Mouse, Rat

PRODUCT PROPERTIES

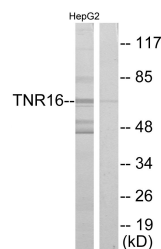
Clonality	Polyclonal
Clone ID	
Concentration	1 mg/mL
Conjugation	Unconjugated
Purification	The antibody was affinity-purified from rabbit anti-serum by affinity-chromatography.
Dilution Range	WB 1:500-1:2000 IF 1:200-1:1000 ELISA 1:40000
Formulation	PBS, 50% Glycerol, 0.5% BSA and 0.02% Sodium Azide.
Isotype	IgG
Storage Instruction	Store at -20°C for up to 1 year from the date of receipt, and avoid repeat freeze-thaw cycles.

TARGET INFORMATION

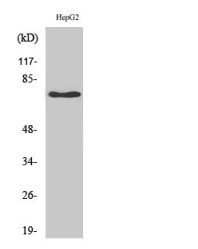
Gene ID	4804
Gene Symbol	NGFR
Uniprot ID	TNR16_HUMAN
Immunogen	The antiserum was produced against synthesized peptide derived from human TNR16 at amino acid range 121-170
Immunogen Region	90-170 Internal
Specificity	NGFR polyclonal antibody (Tumor Necrosis Factor Receptor Superfamily Member 16) binds to endogenous Tumor Necrosis Factor Receptor Superfamily Member 16 at the amino acid region 90-170 Internal.
Immunogen Sequence	



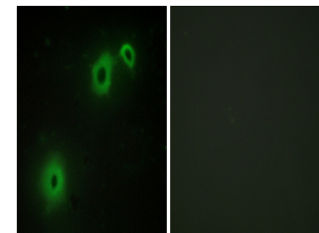
Western blot analysis of the lysates from HeLa cells using TNR16 antibody.



Western blot analysis of lysates from HepG2 cells, using TNR16 Antibody. The lane on the right is blocked with the synthesized peptide.



Western blot analysis of HepG2 cells using NGFR p75 Polyclonal Antibody



Immunofluorescence analysis of A549 cells, using TNR16 Antibody. The picture on the right is blocked with the synthesized peptide.

This product is suitable for in-vitro studies under the RESEARCH USE ONLY [RUO] licence. This product must not be used as for diagnostic or other medical purposes.
St John's Laboratory Ltd, Knowledge Dock Business Centre, University Way, London, E16 2RD | Tel: 0208 223 3081