

## Anti-RELA antibody (250-330) (STJ94469)

STJ94469

### GENERAL INFORMATION

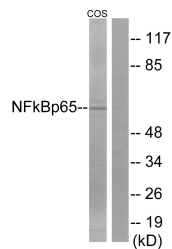
<b>Product Type</b>	Primary antibodies
<b>Short Description</b>	Rabbit polyclonal antibody anti-Transcription Factor P65 (250-330) is suitable for use in Western Blot, Immunohistochemistry, Immunofluorescence, Immunocytochemistry and ELISA research applications.
<b>Applications</b>	WB, IHC-P, IF, ICC, ELISA
<b>Host/Source</b>	Rabbit
<b>Reactivity</b>	Human, Mouse, Monkey

### PRODUCT PROPERTIES

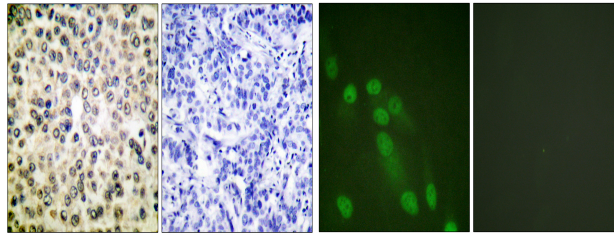
<b>Clonality</b>	Polyclonal
<b>Clone ID</b>	
<b>Concentration</b>	1 mg/mL
<b>Conjugation</b>	Unconjugated
<b>Purification</b>	The antibody was affinity-purified from rabbit anti-serum by affinity-chromatography.
<b>Dilution Range</b>	WB 1:500-1:2000 IHC 1:100-1:300 IF 1:200-1:1000 ELISA 1:10000
<b>Formulation</b>	PBS, 50% Glycerol, 0.5% BSA and 0.02% Sodium Azide.
<b>Isotype</b>	IgG
<b>Storage Instruction</b>	Store at -20°C for up to 1 year from the date of receipt, and avoid repeat freeze-thaw cycles.

### TARGET INFORMATION

<b>Gene ID</b>	5970
<b>Gene Symbol</b>	RELA
<b>Uniprot ID</b>	TF65_HUMAN
<b>Immunogen</b>	The antiserum was produced against synthesized peptide derived from human NF-kappaB p65 at amino acid range 275-324
<b>Immunogen Region</b>	250-330
<b>Specificity</b>	RELA polyclonal antibody (Transcription Factor P65) binds to endogenous Transcription Factor P65 at the amino acid region 250-330.
<b>Immunogen Sequence</b>	



Western blot analysis of lysates from COS7 cells, treated with sorbitol 0.4M 24h, using NF-kappaB p65 Antibody. The lane on the right is blocked with the synthesized peptide.



Immunohistochemistry analysis of paraffin-embedded human breast carcinoma tissue, using NF-kappaB p65 Antibody. The picture on the right is blocked with the synthesized peptide.

Immunofluorescence analysis of HeLa cells, using NF-kappaB p65 Antibody. The picture on the right is blocked with the synthesized peptide.

Western blot analysis of mouse brain cells using NF Kappa B-p65 Polyclonal Antibody diluted at 1: 2000