

Anti-NFRKB antibody (440-520 Internal) (STJ94454)

STJ94454

GENERAL INFORMATION

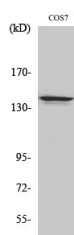
Product Type	Primary antibodies
Short Description	Rabbit polyclonal antibody anti-Nuclear Factor Related To Kappa-B-Binding Protein (440-520 Internal) is suitable for use in Western Blot and ELISA research applications.
Applications	WB, ELISA
Host/Source	Rabbit
Reactivity	Human, Mouse, Monkey

PRODUCT PROPERTIES

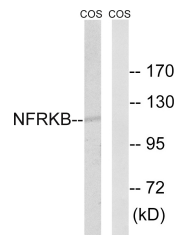
Clonality	Polyclonal
Clone ID	
Concentration	1 mg/mL
Conjugation	Unconjugated
Purification	The antibody was affinity-purified from rabbit anti-serum by affinity-chromatography.
Dilution	WB 1:500-1:2000
Range	ELISA 1:40000
Formulation	PBS, 50% Glycerol, 0.5% BSA and 0.02% Sodium Azide.
Isotype	IgG
Storage	Store at 20°C for up to 1 year from the date of receipt, and avoid repeat freeze-thaw cycles.
Instruction	

TARGET INFORMATION

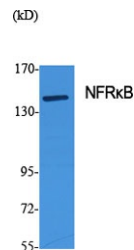
Gene ID	4798
Gene Symbol	NFRKB
Uniprot ID	NFRKB_HUMAN
Immunogen	The antiserum was produced against synthesized peptide derived from human NFRKB at amino acid range 463-512
Immunogen Region	440-520 Internal
Specificity	NFRKB polyclonal antibody (Nuclear Factor Related To Kappa-B-Binding Protein) binds to endogenous Nuclear Factor Related To Kappa-B-Binding Protein at the amino acid region 440-520 Internal.
Immunogen Sequence	



Western blot analysis of COS7 cells using NFR Kappa B Polyclonal Antibody diluted at 1: 500 cells nucleus extracted by Minute™ Cytoplasmic and Nuclear Fractionation kit (SC-003, Inventibiotech, MN, USA).



Western blot analysis of lysates from COS7 cells, using NFRKB Antibody. The lane on the right is blocked with the synthesized peptide.



Western blot analysis of various cells using NFR Kappa B Polyclonal Antibody diluted at 1: 500 cells nucleus extracted by Minute™ Cytoplasmic and Nuclear Fractionation kit (SC-003, Inventibiotech, MN, USA).

This product is suitable for in-vitro studies under the RESEARCH USE ONLY [RUO] licence. This product must not be used as for diagnostic or other medical purposes.
 St John's Laboratory Ltd, Knowledge Dock Business Centre, University Way, London, E16 2RD | Tel: 0208 223 3081