

Anti-NFATC3 antibody (100-180) (STJ94448)

STJ94448

GENERAL INFORMATION

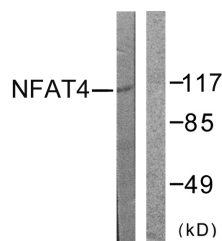
Product Type	Primary antibodies
Short Description	Rabbit polyclonal antibody anti-Nuclear Factor Of Activated T-Cells-Cytoplasmic 3 (100-180) is suitable for use in Western Blot, Immunohistochemistry, Immunofluorescence and ELISA research applications.
Applications	WB, IHC-P, IF-P, ELISA
Host/Source	Rabbit
Reactivity	Human, Mouse

PRODUCT PROPERTIES

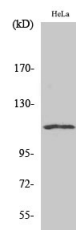
Clonality	Polyclonal
Clone ID	
Concentration	1 mg/mL
Conjugation	Unconjugated
Purification	The antibody was affinity-purified from rabbit anti-serum by affinity-chromatography.
Dilution Range	WB 1:500-1:2000 IHC 1:100-1:300 ELISA 1:10000
Formulation	PBS, 50% Glycerol, 0.5% BSA and 0.02% Sodium Azide.
Isotype	IgG
Storage Instruction	Store at -20°C for up to 1 year from the date of receipt, and avoid repeat freeze-thaw cycles.

TARGET INFORMATION

Gene ID	4775
Gene Symbol	NFATC3
Uniprot ID	NFAC3_HUMAN
Immunogen Region	The antiserum was produced against synthesized peptide derived from human NFAT4 at amino acid range 131-180
Immunogen Region	100-180
Specificity	NFATC3 polyclonal antibody (Nuclear Factor Of Activated T-Cells-Cytoplasmic 3) binds to endogenous Nuclear Factor Of Activated T-Cells-Cytoplasmic 3 at the amino acid region 100-180.
Immunogen Sequence	



Western blot analysis of lysates from HeLa cells, treated with Ca⁺ 40nM 30', using NFAT4 Antibody. The lane on the right is blocked with the synthesized peptide.



Western blot analysis of various cells using NFATc3 Polyclonal Antibody

This product is suitable for in-vitro studies under the RESEARCH USE ONLY [RUO] licence. This product must not be used as for diagnostic or other medical purposes.
St John's Laboratory Ltd, Knowledge Dock Business Centre, University Way, London, E16 2RD | Tel: 0208 223 3081