

## Anti-NF-1 antibody (30-110 N-Term) (STJ94443)

STJ94443

### GENERAL INFORMATION

<b>Product Type</b>	Primary antibodies
<b>Short Description</b>	Rabbit polyclonal antibody anti-Nuclear factor 1 A-type and Nuclear factor 1 B-type and Nuclear factor 1 C-type and Nuclear factor 1 X-type (30-110 N-Term) is suitable for use in Western Blot, Immunohistochemistry, Immunofluorescence and ELISA research
<b>Applications</b>	WB, IHC-P, IF-P, ELISA
<b>Host/Source</b>	Rabbit
<b>Reactivity</b>	Human, Mouse, Rat

### PRODUCT PROPERTIES

<b>Clonality</b>	Polyclonal
<b>Clone ID</b>	
<b>Concentration</b>	1 mg/mL
<b>Conjugation</b>	Unconjugated
<b>Purification</b>	The antibody was affinity-purified from rabbit anti-serum by affinity-chromatography.
<b>Dilution Range</b>	WB 1:500-1:2000 IHC 1:100-1:300 ELISA 1:20000
<b>Formulation</b>	PBS, 50% Glycerol, 0.5% BSA and 0.02% Sodium Azide.
<b>Isotype</b>	IgG
<b>Storage Instruction</b>	Store at -20°C for up to 1 year from the date of receipt, and avoid repeat freeze-thaw cycles.

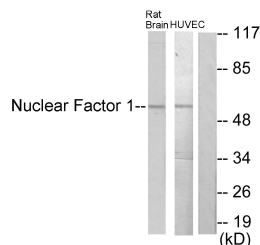
### TARGET INFORMATION

**Gene ID** [4782](#)  
[4784](#)  
[4781](#)  
[NFIC](#)  
[NFIH](#)  
[NFIC\\_HUMAN](#)  
[NFIH\\_HUMAN](#)  
[NFIB\\_HUMAN](#)  
 <

**Immunogen Region** The antiserum was produced against synthesized peptide derived from human Nuclear Factor 1 at amino acid range 11-60  
 30-110 N-Term

**Specificity** NF-1 polyclonal antibody (Nuclear factor 1 A-type and Nuclear factor 1 B-type and Nuclear factor 1 C-type and Nuclear factor 1 X-type) binds to endogenous Nuclear factor 1 A-type and Nuclear factor 1 B-type and Nuclear factor 1 C-type and Nuclear fac

**Immunogen Sequence**



Western blot analysis of lysates from rat brain and HUVEC cells, using Nuclear Factor 1 Antibody. The lane on the right is blocked with the synthesized peptide.

This product is suitable for in-vitro studies under the RESEARCH USE ONLY [RUO] licence. This product must not be used as for diagnostic or other medical purposes.  
 St John's Laboratory Ltd, Knowledge Dock Business Centre, University Way, London, E16 2RD | Tel: 0208 223 3081