

Anti-OPN5 antibody (220-300 C-Term) (STJ94441)

STJ94441

GENERAL INFORMATION

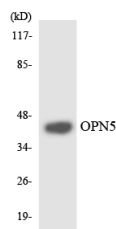
Product Type	Primary antibodies
Short Description	Rabbit polyclonal antibody anti-Opsin-5 (220-300 C-Term) is suitable for use in Western Blot, Immunofluorescence, Immunocytochemistry and ELISA research applications.
Applications	WB, IF, ICC, ELISA
Host/Source	Rabbit
Reactivity	Human, Mouse

PRODUCT PROPERTIES

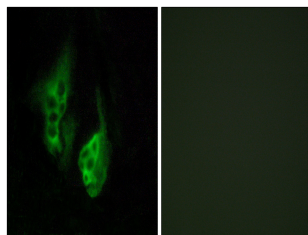
Clonality	Polyclonal
Clone ID	
Concentration	1 mg/mL
Conjugation	Unconjugated
Purification	The antibody was affinity-purified from rabbit anti-serum by affinity-chromatography.
Dilution Range	WB 1:500-1:2000 IF 1:200-1:1000 ELISA 1:5000
Formulation	PBS, 50% Glycerol, 0.5% BSA and 0.02% Sodium Azide.
Isotype	IgG
Storage Instruction	Store at -20°C for up to 1 year from the date of receipt, and avoid repeat freeze-thaw cycles.

TARGET INFORMATION

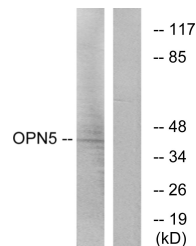
Gene ID	221391
Gene Symbol	OPN5
Uniprot ID	OPN5_HUMAN
Immunogen	The antiserum was produced against synthesized peptide derived from human OPN5 at amino acid range 251-300
Immunogen Region	220-300 C-Term
Specificity	OPN5 polyclonal antibody (Opsin-5) binds to endogenous Opsin-5 at the amino acid region 220-300 C-Term.
Immunogen Sequence	



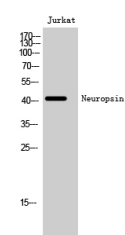
Western blot analysis of the lysates from HUVEC cells using OPN5 antibody.



Immunofluorescence analysis of HeLa cells, using OPN5 Antibody. The picture on the right is blocked with the synthesized peptide.



Western blot analysis of lysates from Jurkat cells, using OPN5 Antibody. The lane on the right is blocked with the synthesized peptide.



Western blot analysis of Jurkat cells using Neuropsin Polyclonal Antibody

This product is suitable for in-vitro studies under the RESEARCH USE ONLY [RUO] licence. This product must not be used as for diagnostic or other medical purposes.
St John's Laboratory Ltd, Knowledge Dock Business Centre, University Way, London, E16 2RD | Tel: 0208 223 3081