

Anti-NPAS1 antibody (420-500 C-Term) (STJ94436)

STJ94436

GENERAL INFORMATION

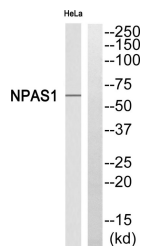
Product Type	Primary antibodies
Short Description	Rabbit polyclonal antibody anti-Neuronal Pas Domain-Containing Protein 1 (420-500 C-Term) is suitable for use in Western Blot and ELISA research applications.
Applications	WB, ELISA
Host/Source	Rabbit
Reactivity	Human, Rat, Mouse

PRODUCT PROPERTIES

Clonality	Polyclonal
Clone ID	
Concentration	1 mg/mL
Conjugation	Unconjugated
Purification	The antibody was affinity-purified from rabbit anti-serum by affinity-chromatography.
Dilution Range	WB 1:500-1:2000 ELISA 1:40000
Formulation	PBS, 50% Glycerol, 0.5% BSA and 0.02% Sodium Azide.
Isotype	IgG
Storage	Store at -20°C for up to 1 year from the date of receipt, and avoid repeat freeze-thaw cycles.
Instruction	

TARGET INFORMATION

Gene ID	4861
Gene Symbol	NPAS1
Uniprot ID	NPAS1_HUMAN
Immunogen	The antiserum was produced against synthesized peptide derived from human NPAS1 at amino acid range 445-494
Immunogen Region	420-500 C-Term
Specificity	NPAS1 polyclonal antibody (Neuronal Pas Domain-Containing Protein 1) binds to endogenous Neuronal Pas Domain-Containing Protein 1 at the amino acid region 420-500 C-Term.
Immunogen Sequence	



Western blot analysis of NPAS1 Antibody. The lane on the right is blocked with the NPAS1 peptide.

This product is suitable for in-vitro studies under the RESEARCH USE ONLY [RUO] licence. This product must not be used as for diagnostic or other medical purposes.
 St John's Laboratory Ltd, Knowledge Dock Business Centre, University Way, London, E16 2RD | Tel: 0208 223 3081