

Anti-NMU antibody (120-200 C-Term) (STJ94433)

STJ94433

GENERAL INFORMATION

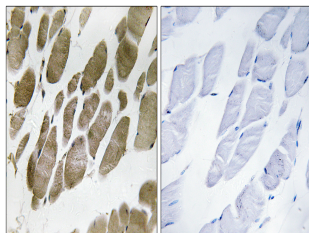
Product Type	Primary antibodies
Short Description	Rabbit polyclonal antibody anti-Neuromedin-U Cleaved Into-Neuromedin Precursor-Related Peptide 36 (120-200 C-Term) is suitable for use in Western Blot, Immunohistochemistry, Immunofluorescence and ELISA research applications.
Applications	WB, IHC-P, IF-P, ELISA
Host/Source	Rabbit
Reactivity	Human, Rat, Mouse

PRODUCT PROPERTIES

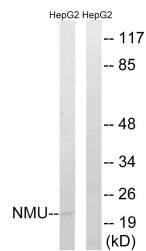
Clonality	Polyclonal
Clone ID	
Concentration	1 mg/mL
Conjugation	Unconjugated
Purification	The antibody was affinity-purified from rabbit anti-serum by affinity-chromatography.
Dilution Range	WB 1:500-1:2000 IHC 1:100-1:300 ELISA 1:40000
Formulation	PBS, 50% Glycerol, 0.5% BSA and 0.02% Sodium Azide.
Isotype	IgG
Storage Instruction	Store at -20°C for up to 1 year from the date of receipt, and avoid repeat freeze-thaw cycles.

TARGET INFORMATION

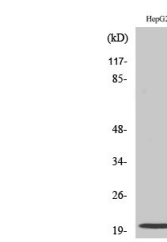
Gene ID	10874
Gene Symbol	NMU
Uniprot ID	NMU_HUMAN
Immunogen	The antiserum was produced against synthesized peptide derived from human NMU at amino acid range 125-174
Immunogen Region	120-200 C-Term
Specificity	NMU polyclonal antibody (Neuromedin-U Cleaved Into-Neuromedin Precursor-Related Peptide 36) binds to endogenous Neuromedin-U Cleaved Into-Neuromedin Precursor-Related Peptide 36 at the amino acid region 120-200 C-Term.
Immunogen Sequence	



Immunohistochemistry analysis of paraffin-embedded human skeletal muscle tissue, using NMU Antibody. The picture on the right is blocked with the synthesized peptide.



Western blot analysis of lysates from HepG2 cells, using NMU Antibody. The lane on the right is blocked with the synthesized peptide.



Western blot analysis of various cells using Neuromedin-U Polyclonal Antibody diluted at 1:500.