

Anti-NF1 antibody (1520-1600 Internal) (STJ94430)

STJ94430

GENERAL INFORMATION

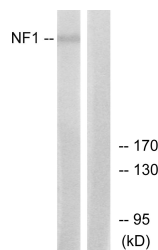
Product Type	Primary antibodies
Short Description	Rabbit polyclonal antibody anti-Neurofibromin (1520-1600 Internal) is suitable for use in Western Blot, Immunofluorescence, Immunocytochemistry and ELISA research applications.
Applications	WB, IF, ICC, ELISA
Host/Source	Rabbit
Reactivity	Human, Mouse, Rat

PRODUCT PROPERTIES

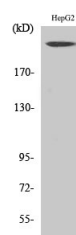
Clonality	Polyclonal
Clone ID	
Concentration	1 mg/mL
Conjugation	Unconjugated
Purification	The antibody was affinity-purified from rabbit anti-serum by affinity-chromatography.
Dilution Range	WB 1:500-1:2000 IF 1:200-1:1000 ELISA 1:20000
Formulation	PBS, 50% Glycerol, 0.5% BSA and 0.02% Sodium Azide.
Isotype	IgG
Storage Instruction	Store at -20°C for up to 1 year from the date of receipt, and avoid repeat freeze-thaw cycles.

TARGET INFORMATION

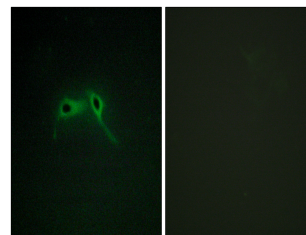
Gene ID	4763
Gene Symbol	NF1
Uniprot ID	NF1_HUMAN
Immunogen	The antiserum was produced against synthesized peptide derived from human NF1 at amino acid range 1551-1600
Immunogen Region	1520-1600 Internal
Specificity	NF1 polyclonal antibody (Neurofibromin) binds to endogenous Neurofibromin at the amino acid region 1520-1600 Internal.
Immunogen Sequence	



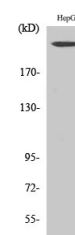
Western blot analysis of lysates from HepG2 cells, using NF1 Antibody. The lane on the right is blocked with the synthesized peptide.



Western blot analysis of HepG2 cells using Neurofibromin Polyclonal Antibody



Immunofluorescence analysis of HepG2 cells, using NF1 Antibody. The picture on the right is blocked with the synthesized peptide.



Western blot analysis of various cells using Neurofibromin Polyclonal Antibody

This product is suitable for in-vitro studies under the RESEARCH USE ONLY [RUO] licence. This product must not be used as for diagnostic or other medical purposes.
St John's Laboratory Ltd, Knowledge Dock Business Centre, University Way, London, E16 2RD | Tel: 0208 223 3081