

Anti-NXPH4 antibody (190-270 C-Term) (STJ94425)

STJ94425

GENERAL INFORMATION

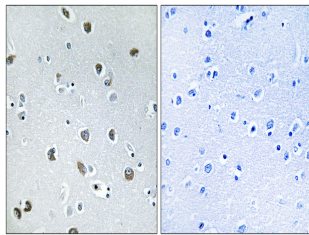
Product Type	Primary antibodies
Short Description	Rabbit polyclonal antibody anti-Neurexophilin-4 (190-270 C-Term) is suitable for use in Western Blot, Immunohistochemistry, Immunofluorescence and ELISA research applications.
Applications	WB, IHC-P, IF-P, ELISA
Host/Source	Rabbit
Reactivity	Human, Rat

PRODUCT PROPERTIES

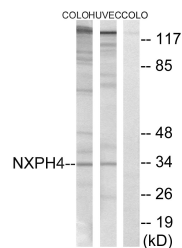
Clonality	Polyclonal
Clone ID	
Concentration	1 mg/mL
Conjugation	Unconjugated
Purification	The antibody was affinity-purified from rabbit anti-serum by affinity-chromatography.
Dilution Range	WB 1:500-1:2000 IHC 1:100-1:300 ELISA 1:40000
Formulation	PBS, 50% Glycerol, 0.5% BSA and 0.02% Sodium Azide.
Isotype	IgG
Storage Instruction	Store at -20°C for up to 1 year from the date of receipt, and avoid repeat freeze-thaw cycles.

TARGET INFORMATION

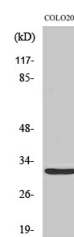
Gene ID	11247
Gene Symbol	NXPH4
Uniprot ID	NXPH4_HUMAN
Immunogen	The antiserum was produced against synthesized peptide derived from human NXPH4 at amino acid range 216-265
Immunogen Region	190-270 C-Term
Specificity	NXPH4 polyclonal antibody (Neurexophilin-4) binds to endogenous Neurexophilin-4 at the amino acid region 190-270 C-Term.
Immunogen Sequence	



Immunohistochemistry analysis of paraffin-embedded human brain tissue, using NXPH4 Antibody. The picture on the right is blocked with the synthesized peptide.



Western blot analysis of lysates from COLO and HUVEC cells, using NXPH4 Antibody. The lane on the right is blocked with the synthesized peptide.



Western blot analysis of various cells using Neurexophilin-4 Polyclonal Antibody