

## Anti-NXPH3 antibody (130-210 Internal) (STJ94424)

STJ94424

### GENERAL INFORMATION

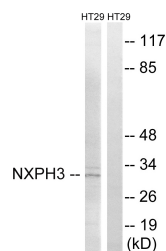
<b>Product Type</b>	Primary antibodies
<b>Short Description</b>	Rabbit polyclonal antibody anti-Neurexophilin-3 (130-210 Internal) is suitable for use in Western Blot, Immunohistochemistry, Immunofluorescence and ELISA research applications.
<b>Applications</b>	WB, IHC-P, IF-P, ELISA
<b>Host/Source</b>	Rabbit
<b>Reactivity</b>	Human, Mouse, Rat

### PRODUCT PROPERTIES

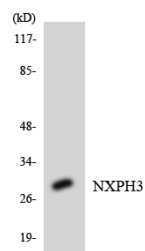
<b>Clonality</b>	Polyclonal
<b>Clone ID</b>	
<b>Concentration</b>	1 mg/mL
<b>Conjugation</b>	Unconjugated
<b>Purification</b>	The antibody was affinity-purified from rabbit anti-serum by affinity-chromatography.
<b>Dilution Range</b>	WB 1:500-1:2000 IHC 1:100-1:300 ELISA 1:10000
<b>Formulation</b>	PBS, 50% Glycerol, 0.5% BSA and 0.02% Sodium Azide.
<b>Isotype</b>	IgG
<b>Storage Instruction</b>	Store at -20°C for up to 1 year from the date of receipt, and avoid repeat freeze-thaw cycles.

### TARGET INFORMATION

<b>Gene ID</b>	11248
<b>Gene Symbol</b>	<a href="#">NXPH3</a>
<b>Uniprot ID</b>	<a href="#">NXPH3_HUMAN</a>
<b>Immunogen</b>	The antiserum was produced against synthesized peptide derived from human NXPH3 at amino acid range 158-207
<b>Immunogen Region</b>	130-210 Internal
<b>Specificity</b>	NXPH3 polyclonal antibody (Neurexophilin-3) binds to endogenous Neurexophilin-3 at the amino acid region 130-210 Internal.
<b>Immunogen Sequence</b>	



Western blot analysis of lysates from HT-29 cells, using NXPH3 Antibody. The lane on the right is blocked with the synthesized peptide.



Western blot analysis of the lysates from HepG2 cells using NXPH3 antibody.



Western blot analysis of various cells using Neurexophilin-3 Polyclonal Antibody