

Anti-NXPH1 antibody (50-130 Internal) (STJ94423)

STJ94423

GENERAL INFORMATION

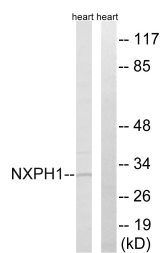
Product Type	Primary antibodies
Short Description	Rabbit polyclonal antibody anti-Neurexophilin-1 (50-130 Internal) is suitable for use in Western Blot, Immunohistochemistry, Immunofluorescence and ELISA research applications.
Applications	WB, IHC-P, IF-P, ELISA
Host/Source	Rabbit
Reactivity	Human, Mouse, Rat

PRODUCT PROPERTIES

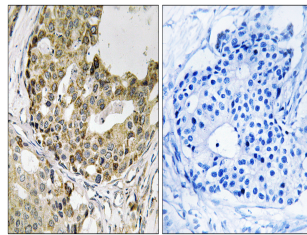
Clonality	Polyclonal
Clone ID	
Concentration	1 mg/mL
Conjugation	Unconjugated
Purification	The antibody was affinity-purified from rabbit anti-serum by affinity-chromatography.
Dilution Range	WB 1:500-1:2000 IHC 1:100-1:300 ELISA 1:20000
Formulation	PBS, 50% Glycerol, 0.5% BSA and 0.02% Sodium Azide.
Isotype	IgG
Storage Instruction	Store at -20°C for up to 1 year from the date of receipt, and avoid repeat freeze-thaw cycles.

TARGET INFORMATION

Gene ID	30010
Gene Symbol	NXPH1
Uniprot ID	NXPH1_HUMAN
Immunogen	The antiserum was produced against synthesized peptide derived from human NXPH1 at amino acid range 77-126
Immunogen Region	50-130 Internal
Specificity	NXPH1 polyclonal antibody (Neurexophilin-1) binds to endogenous Neurexophilin-1 at the amino acid region 50-130 Internal.
Immunogen Sequence	



Western blot analysis of lysates from rat heart cells, using NXPH1 Antibody. The lane on the right is blocked with the synthesized peptide.



Immunohistochemistry analysis of paraffin-embedded human breast carcinoma tissue, using NXPH1 Antibody. The picture on the right is blocked with the synthesized peptide.