

Anti-NRXN3 antibody (30-110 N-Term) (STJ94422)

STJ94422

GENERAL INFORMATION

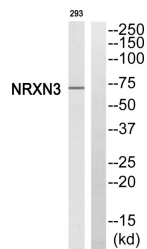
Product Type	Primary antibodies
Short Description	Rabbit polyclonal antibody anti-Neurexin-3-Beta (30-110 N-Term) is suitable for use in Western Blot and ELISA research applications.
Applications	WB, ELISA
Host/Source	Rabbit
Reactivity	Human, Rat, Mouse

PRODUCT PROPERTIES

Clonality	Polyclonal
Clone ID	
Concentration	1 mg/mL
Conjugation	Unconjugated
Purification	The antibody was affinity-purified from rabbit anti-serum by affinity-chromatography.
Dilution Range	WB 1:500-1:2000 ELISA 1:20000
Formulation	PBS, 50% Glycerol, 0.5% BSA and 0.02% Sodium Azide.
Isotype	IgG
Storage Instruction	Store at -20°C for up to 1 year from the date of receipt, and avoid repeat freeze-thaw cycles.

TARGET INFORMATION

Gene ID	9369
Gene Symbol	NRXN3
Uniprot ID	NRX3B_HUMAN
Immunogen	Synthesized peptide derived from Neurexin III Beta. at amino acid range: 30-110
Immunogen Region	30-110 N-Term
Specificity	NRXN3 polyclonal antibody (Neurexin-3-Beta) binds to endogenous Neurexin-3-Beta at the amino acid region 30-110 N-Term.
Immunogen Sequence	



Western blot analysis of NRXN3 Antibody. The lane on the right is blocked with the NRXN3 peptide.

This product is suitable for in-vitro studies under the RESEARCH USE ONLY [RUO] licence. This product must not be used as for diagnostic or other medical purposes.
St John's Laboratory Ltd, Knowledge Dock Business Centre, University Way, London, E16 2RD | Tel: 0208 223 3081