

Anti-NRXN1 antibody (480-560 Internal) (STJ94421)

STJ94421

GENERAL INFORMATION

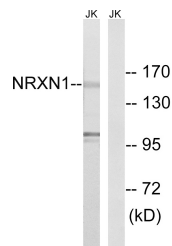
Product Type	Primary antibodies
Short Description	Rabbit polyclonal antibody anti-Neurexin-1 (480-560 Internal) is suitable for use in Western Blot and ELISA research applications.
Applications	WB, ELISA
Host/Source	Rabbit
Reactivity	Human, Mouse, Rat

PRODUCT PROPERTIES

Clonality	Polyclonal
Clone ID	
Concentration	1 mg/mL
Conjugation	Unconjugated
Purification	The antibody was affinity-purified from rabbit anti-serum by affinity-chromatography.
Dilution Range	WB 1:500-1:2000 ELISA 1:20000
Formulation	PBS, 50% Glycerol, 0.5% BSA and 0.02% Sodium Azide.
Isotype	IgG
Storage Instruction	Store at -20°C for up to 1 year from the date of receipt, and avoid repeat freeze-thaw cycles.

TARGET INFORMATION

Gene ID	9378
Gene Symbol	NRXN1
Uniprot ID	NRX1A_HUMAN
Immunogen	The antiserum was produced against synthesized peptide derived from human NRXN1 at amino acid range 502-551
Immunogen Region	480-560 Internal
Specificity	NRXN1 polyclonal antibody (Neurexin-1) binds to endogenous Neurexin-1 at the amino acid region 480-560 Internal.
Immunogen Sequence	



Western blot analysis of lysates from Jurkat cells, using NRXN1 Antibody. The lane on the right is blocked with the synthesized peptide.

This product is suitable for in-vitro studies under the RESEARCH USE ONLY [RUO] licence. This product must not be used as for diagnostic or other medical purposes.
St John's Laboratory Ltd, Knowledge Dock Business Centre, University Way, London, E16 2RD | Tel: 0208 223 3081