

## Anti-NRSN1 antibody (90-170 Internal) (STJ94420)

STJ94420

### GENERAL INFORMATION

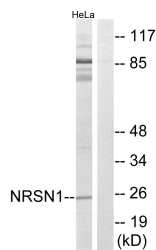
<b>Product Type</b>	Primary antibodies
<b>Short Description</b>	Rabbit polyclonal antibody anti-Neurensin-1 (90-170 Internal) is suitable for use in Western Blot, Immunohistochemistry, Immunofluorescence and ELISA research applications.
<b>Applications</b>	WB, IHC-P, IF-P, ELISA
<b>Host/Source</b>	Rabbit
<b>Reactivity</b>	Human, Mouse, Rat

### PRODUCT PROPERTIES

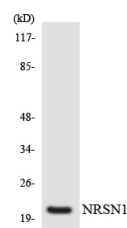
<b>Clonality</b>	Polyclonal
<b>Clone ID</b>	
<b>Concentration</b>	1 mg/mL
<b>Conjugation</b>	Unconjugated
<b>Purification</b>	The antibody was affinity-purified from rabbit anti-serum by affinity-chromatography.
<b>Dilution Range</b>	WB 1:500-1:2000 IHC 1:100-1:300 ELISA 1:40000
<b>Formulation</b>	PBS, 50% Glycerol, 0.5% BSA and 0.02% Sodium Azide.
<b>Isotype</b>	IgG
<b>Storage Instruction</b>	Store at -20°C for up to 1 year from the date of receipt, and avoid repeat freeze-thaw cycles.

### TARGET INFORMATION

<b>Gene ID</b>	140767
<b>Gene Symbol</b>	NRSN1
<b>Uniprot ID</b>	NRSN1_HUMAN
<b>Immunogen</b>	The antiserum was produced against synthesized peptide derived from human NRSN1 at amino acid range 121-170
<b>Immunogen Region</b>	90-170 Internal
<b>Specificity</b>	NRSN1 polyclonal antibody (Neurensin-1) binds to endogenous Neurensin-1 at the amino acid region 90-170 Internal.
<b>Immunogen Sequence</b>	



Western blot analysis of lysates from HeLa cells, using NRSN1 Antibody. The lane on the right is blocked with the synthesized peptide.



Western blot analysis of the lysates from 293 cells using NRSN1 antibody.



Western blot analysis of various cells using Neurensin-1 Polyclonal Antibody