

Anti-NEURL2 antibody (70-150 Internal) (STJ94418)

STJ94418

GENERAL INFORMATION

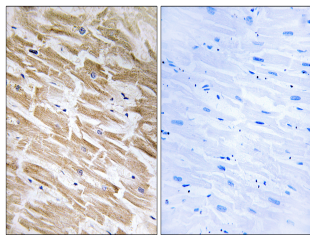
Product Type	Primary antibodies
Short Description	Rabbit polyclonal antibody anti-Neuralized-Like Protein 2 (70-150 Internal) is suitable for use in Western Blot, Immunohistochemistry, Immunofluorescence and ELISA research applications.
Applications	WB, IHC-P, IF-P, ELISA
Host/Source	Rabbit
Reactivity	Human, Mouse

PRODUCT PROPERTIES

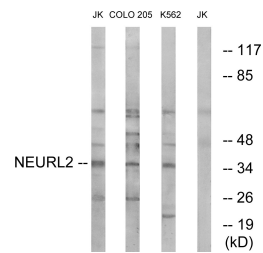
Clonality	Polyclonal
Clone ID	
Concentration	1 mg/mL
Conjugation	Unconjugated
Purification	The antibody was affinity-purified from rabbit anti-serum by affinity-chromatography.
Dilution Range	WB 1:500-1:2000 IHC 1:100-1:300 ELISA 1:40000
Formulation	PBS, 50% Glycerol, 0.5% BSA and 0.02% Sodium Azide.
Isotype	IgG
Storage Instruction	Store at -20°C for up to 1 year from the date of receipt, and avoid repeat freeze-thaw cycles.

TARGET INFORMATION

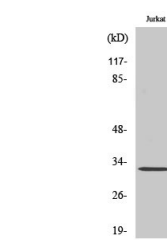
Gene ID	140825
Gene Symbol	NEURL2
Uniprot ID	NEUL2_HUMAN
Immunogen	The antiserum was produced against synthesized peptide derived from human NEURL2 at amino acid range 99-148
Immunogen Region	70-150 Internal
Specificity	NEURL2 polyclonal antibody (Neuralized-Like Protein 2) binds to endogenous Neuralized-Like Protein 2 at the amino acid region 70-150 Internal.
Immunogen Sequence	



Immunohistochemistry analysis of paraffin-embedded human heart tissue, using NEURL2 Antibody. The picture on the right is blocked with the synthesized peptide.



Western blot analysis of lysates from Jurkat, COLO, and K562 cells, using NEURL2 Antibody. The lane on the right is blocked with the synthesized peptide.



Western blot analysis of various cells using Neuralized-2 Polyclonal Antibody