

Anti-ELK3 antibody (300-380) (STJ94405)

STJ94405

GENERAL INFORMATION

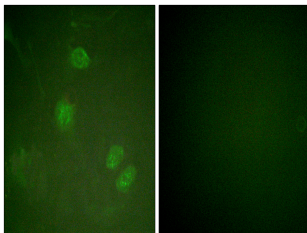
Product Type	Primary antibodies
Short Description	Rabbit polyclonal antibody anti-Ets Domain-Containing Protein Elk-3 (300-380) is suitable for use in Immunofluorescence, Immunocytochemistry and ELISA research applications.
Applications	IF, ICC, ELISA
Host/Source	Rabbit
Reactivity	Human, Mouse

PRODUCT PROPERTIES

Clonality	Polyclonal
Clone ID	
Concentration	1 mg/mL
Conjugation	Unconjugated
Purification	The antibody was affinity-purified from rabbit anti-serum by affinity-chromatography.
Dilution Range	IF 1:200-1:1000 ELISA 1:20000
Formulation	PBS, 50% Glycerol, 0.5% BSA and 0.02% Sodium Azide.
Isotype	IgG
Storage	Store at -20°C for up to 1 year from the date of receipt, and avoid repeat freeze-thaw cycles.
Instruction	

TARGET INFORMATION

Gene ID	2004
Gene Symbol	ELK3
Uniprot ID	ELK3_HUMAN
Immunogen	The antiserum was produced against synthesized peptide derived from human Elk3 at amino acid range 323-372
Immunogen Region	300-380
Specificity	ELK3 polyclonal antibody (Ets Domain-Containing Protein Elk-3) binds to endogenous Ets Domain-Containing Protein Elk-3 at the amino acid region 300-380.
Immunogen Sequence	



Immunofluorescence analysis of HeLa cells, using Elk3 Antibody. The picture on the right is blocked with the synthesized peptide.