

Anti-IQCB1 antibody (400-480 Internal) (STJ94403)

STJ94403

GENERAL INFORMATION

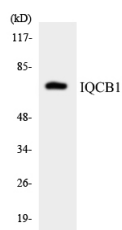
Product Type	Primary antibodies
Short Description	Rabbit polyclonal antibody anti-Iq Calmodulin-Binding Motif-Containing Protein 1 (400-480 Internal) is suitable for use in Western Blot, Immunohistochemistry, Immunofluorescence and ELISA research applications.
Applications	WB, IHC-P, IF-P, ELISA
Host/Source	Rabbit
Reactivity	Human, Rat, Mouse

PRODUCT PROPERTIES

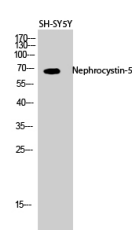
Clonality	Polyclonal
Clone ID	
Concentration	1 mg/mL
Conjugation	Unconjugated
Purification	The antibody was affinity-purified from rabbit anti-serum by affinity-chromatography.
Dilution Range	WB 1:500-1:2000 IHC 1:100-1:300 ELISA 1:40000
Formulation	PBS, 50% Glycerol, 0.5% BSA and 0.02% Sodium Azide.
Isotype	IgG
Storage Instruction	Store at 20°C for up to 1 year from the date of receipt, and avoid repeat freeze-thaw cycles.

TARGET INFORMATION

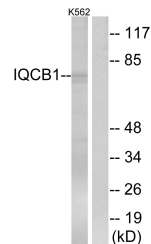
Gene ID	9657
Gene Symbol	IQCB1
Uniprot ID	IQCB1_HUMAN
Immunogen	The antiserum was produced against synthesized peptide derived from human IQCB1 at amino acid range 431-480
Immunogen Region	400-480 Internal
Specificity	IQCB1 polyclonal antibody (Iq Calmodulin-Binding Motif-Containing Protein 1) binds to endogenous Iq Calmodulin-Binding Motif-Containing Protein 1 at the amino acid region 400-480 Internal.
Immunogen Sequence	



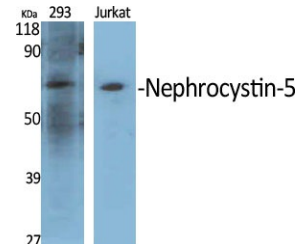
Western blot analysis of the lysates from HepG2 cells using IQCB1 antibody.



Western blot analysis of SH-SY5Y cells using Nephrocystin-5 Polyclonal Antibody diluted at 1: 500



Western blot analysis of lysates from K562 cells, using IQCB1 Antibody. The lane on the right is blocked with the synthesized peptide.



Western blot analysis of various cells using Nephrocystin-5 Polyclonal Antibody diluted at 1: 500

This product is suitable for in-vitro studies under the RESEARCH USE ONLY [RUO] licence. This product must not be used as for diagnostic or other medical purposes.
St John's Laboratory Ltd, Knowledge Dock Business Centre, University Way, London, E16 2RD | Tel: 0208 223 3081