

Anti-NEK5 antibody (130-210 Internal) (STJ94398)

STJ94398

GENERAL INFORMATION

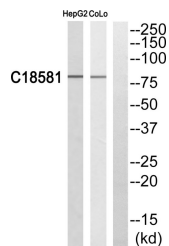
| | |
|--------------------------|--|
| Product Type | Primary antibodies |
| Short Description | Rabbit polyclonal antibody anti-Serine/Threonine-Protein Kinase Nek5 (130-210 Internal) is suitable for use in Western Blot and ELISA research applications. |
| Applications | WB, ELISA |
| Host/Source | Rabbit |
| Reactivity | Human, Mouse |

PRODUCT PROPERTIES

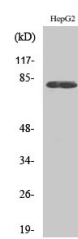
| | |
|----------------------------|--|
| Clonality | Polyclonal |
| Clone ID | |
| Concentration | 1 mg/mL |
| Conjugation | Unconjugated |
| Purification | The antibody was affinity-purified from rabbit anti-serum by affinity-chromatography. |
| Dilution Range | WB 1:500-1:2000 ELISA 1:5000 |
| Formulation | PBS, 50% Glycerol, 0.5% BSA and 0.02% Sodium Azide. |
| Isotype | IgG |
| Storage Instruction | Store at -20°C for up to 1 year from the date of receipt, and avoid repeat freeze-thaw cycles. |

TARGET INFORMATION

| | |
|---------------------------|---|
| Gene ID | 341676 |
| Gene Symbol | NEK5 |
| Uniprot ID | NEK5_HUMAN |
| Immunogen | The antiserum was produced against synthesized peptide derived from human NEK5 at amino acid range 160-209 |
| Immunogen Region | 130-210 Internal |
| Specificity | NEK5 polyclonal antibody (Serine/Threonine-Protein Kinase Nek5) binds to endogenous Serine/Threonine-Protein Kinase Nek5 at the amino acid region 130-210 Internal. |
| Immunogen Sequence | |



Western blot analysis of NEK5 Antibody. The lane on the right is blocked with the NEK5 peptide.



Western blot analysis of various cells using Nek5 Polyclonal Antibody

This product is suitable for in-vitro studies under the RESEARCH USE ONLY [RUO] licence. This product must not be used as for diagnostic or other medical purposes.
 St John's Laboratory Ltd, Knowledge Dock Business Centre, University Way, London, E16 2RD | Tel: 0208 223 3081