

Anti-NEGR1 antibody (150-230 Internal) (STJ94394)

STJ94394

GENERAL INFORMATION

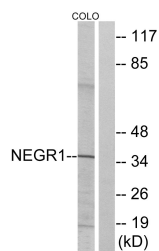
Product Type	Primary antibodies
Short Description	Rabbit polyclonal antibody anti-Neuronal Growth Regulator 1 (150-230 Internal) is suitable for use in Western Blot and ELISA research applications.
Applications	WB, ELISA
Host/Source	Rabbit
Reactivity	Human, Mouse, Rat

PRODUCT PROPERTIES

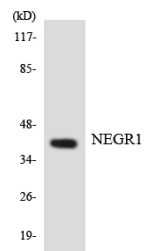
Clonality	Polyclonal
Clone ID	
Concentration	1 mg/mL
Conjugation	Unconjugated
Purification	The antibody was affinity-purified from rabbit anti-serum by affinity-chromatography.
Dilution Range	WB 1:500-1:2000 ELISA 1:20000
Formulation	PBS, 50% Glycerol, 0.5% BSA and 0.02% Sodium Azide.
Isotype	IgG
Storage	Store at -20°C for up to 1 year from the date of receipt, and avoid repeat freeze-thaw cycles.
Instruction	

TARGET INFORMATION

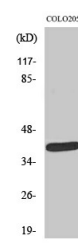
Gene ID	257194
Gene Symbol	NEGR1
Uniprot ID	NEGR1_HUMAN
Immunogen	The antiserum was produced against synthesized peptide derived from human NEGR1 at amino acid range 172-221
Immunogen Region	150-230 Internal
Specificity	NEGR1 polyclonal antibody (Neuronal Growth Regulator 1) binds to endogenous Neuronal Growth Regulator 1 at the amino acid region 150-230 Internal.
Immunogen Sequence	



Western blot analysis of lysates from COLO cells, using NEGR1 Antibody. The lane on the right is blocked with the synthesized peptide.



Western blot analysis of the lysates from COLO205 cells using NEGR1 antibody.



Western blot analysis of various cells using NEGR1 Polyclonal Antibody

This product is suitable for in-vitro studies under the RESEARCH USE ONLY [RUO] licence. This product must not be used as for diagnostic or other medical purposes.
St John's Laboratory Ltd, Knowledge Dock Business Centre, University Way, London, E16 2RD | Tel: 0208 223 3081