

Anti-HECW2 antibody (450-530 Internal) (STJ94392)

STJ94392

GENERAL INFORMATION

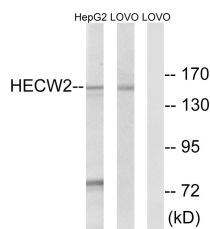
Product Type	Primary antibodies
Short Description	Rabbit polyclonal antibody anti-E3 Ubiquitin-Protein Ligase Hecw2 (450-530 Internal) is suitable for use in Western Blot and ELISA research applications.
Applications	WB, ELISA
Host/Source	Rabbit
Reactivity	Human, Rat, Mouse

PRODUCT PROPERTIES

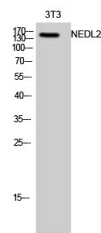
Clonality	Polyclonal
Clone ID	
Concentration	1 mg/mL
Conjugation	Unconjugated
Purification	The antibody was affinity-purified from rabbit anti-serum by affinity-chromatography.
Dilution Range	WB 1:500-1:2000 ELISA 1:10000
Formulation	PBS, 50% Glycerol, 0.5% BSA and 0.02% Sodium Azide.
Isotype	IgG
Storage Instruction	Store at -20°C for up to 1 year from the date of receipt, and avoid repeat freeze-thaw cycles.

TARGET INFORMATION

Gene ID	57520
Gene Symbol	HECW2
Uniprot ID	HECW2_HUMAN
Immunogen	The antiserum was produced against synthesized peptide derived from human HECW2 at amino acid range 481-530
Immunogen Region	450-530 Internal
Specificity	HECW2 polyclonal antibody (E3 Ubiquitin-Protein Ligase Hecw2) binds to endogenous E3 Ubiquitin-Protein Ligase Hecw2 at the amino acid region 450-530 Internal.
Immunogen Sequence	



Western blot analysis of lysates from LOVO and HepG2 cells, using HECW2 Antibody. The lane on the right is blocked with the synthesized peptide.



Western blot analysis of 3T3 cells using NEDL2 Polyclonal Antibody diluted at 1: 1000