

Anti-NDUFV2 antibody (30-110 Internal) (STJ94387)

STJ94387

GENERAL INFORMATION

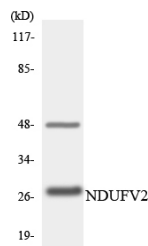
Product Type	Primary antibodies
Short Description	Rabbit polyclonal antibody anti-Nadh Dehydrogenase Ubiquinone Flavoprotein 2-Mitochondrial (30-110 Internal) is suitable for use in Western Blot, Immunohistochemistry, Immunofluorescence and ELISA research applications.
Applications	WB, IHC-P, IF-P, ELISA
Host/Source	Rabbit
Reactivity	Human, Mouse, Rat

PRODUCT PROPERTIES

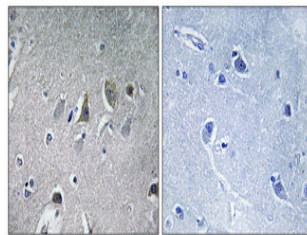
Clonality	Polyclonal
Clone ID	
Concentration	1 mg/mL
Conjugation	Unconjugated
Purification	The antibody was affinity-purified from rabbit anti-serum by affinity-chromatography.
Dilution Range	WB 1:500-1:2000 IHC 1:100-1:300 ELISA 1:40000
Formulation	PBS, 50% Glycerol, 0.5% BSA and 0.02% Sodium Azide.
Isotype	IgG
Storage Instruction	Store at -20°C for up to 1 year from the date of receipt, and avoid repeat freeze-thaw cycles.

TARGET INFORMATION

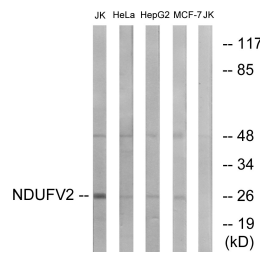
Gene ID	4729
Gene Symbol	NDUFV2
Uniprot ID	NDUFV2_HUMAN
Immunogen	The antiserum was produced against synthesized peptide derived from human NDUFV2 at amino acid range 20-69
Immunogen Region	30-110 Internal
Specificity	NDUFV2 polyclonal antibody (Nadh Dehydrogenase Ubiquinone Flavoprotein 2-Mitochondrial) binds to endogenous Nadh Dehydrogenase Ubiquinone Flavoprotein 2-Mitochondrial at the amino acid region 30-110 Internal.
Immunogen Sequence	



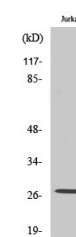
Western blot analysis of the lysates from K562 cells using NDUFV2 antibody.



Immunohistochemical analysis of paraffin-embedded Human brain. Antibody was diluted at 1:100 (4°C overnight). High-pressure and temperature Tris-EDTA, pH8.0 was used for antigen retrieval. Negative control (right) obtained from antibody was pre-absorbed by immunogen peptide.



Western blot analysis of lysates from Jurkat, HeLa, HepG2, and MCF-7 cells, using NDUFV2 Antibody. The lane on the right is blocked with the synthesized peptide.



Western blot analysis of various cells using NDUFV2 Polyclonal Antibody

This product is suitable for in-vitro studies under the RESEARCH USE ONLY [RUO] licence. This product must not be used as for diagnostic or other medical purposes.
St John's Laboratory Ltd, Knowledge Dock Business Centre, University Way, London, E16 2RD | Tel: 0208 223 3081