

Anti-NDUFS6 antibody (50-130 C-Term) (STJ94385)

STJ94385

GENERAL INFORMATION

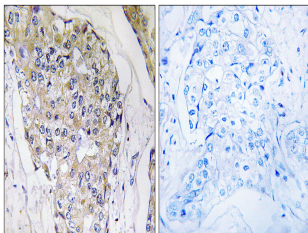
Product Type	Primary antibodies
Short Description	Rabbit polyclonal antibody anti-Nadh Dehydrogenase Ubiquinone Iron-Sulfur Protein 6-Mitochondrial (50-130 C-Term) is suitable for use in Immunohistochemistry, Immunofluorescence and ELISA research applications.
Applications	IHC-P, IF-P, ELISA
Host/Source	Rabbit
Reactivity	Human, Mouse, Rat

PRODUCT PROPERTIES

Clonality	Polyclonal
Clone ID	
Concentration	1 mg/mL
Conjugation	Unconjugated
Purification	The antibody was affinity-purified from rabbit anti-serum by affinity-chromatography.
Dilution	IHC 1:100-1:300
Range	ELISA 1:10000
Formulation	PBS, 50% Glycerol, 0.5% BSA and 0.02% Sodium Azide.
Isotype	IgG
Storage	Store at -20°C for up to 1 year from the date of receipt, and avoid repeat freeze-thaw cycles.
Instruction	

TARGET INFORMATION

Gene ID	4726
Gene Symbol	NDUFS6
Uniprot ID	NDUS6_HUMAN
Immunogen	The antiserum was produced against synthesized peptide derived from human NDUFS6 at amino acid range 75-124
Immunogen Region	50-130 C-Term
Specificity	NDUFS6 polyclonal antibody (Nadh Dehydrogenase Ubiquinone Iron-Sulfur Protein 6-Mitochondrial) binds to endogenous Nadh Dehydrogenase Ubiquinone Iron-Sulfur Protein 6-Mitochondrial at the amino acid region 50-130 C-Term.
Immunogen Sequence	



Immunohistochemistry analysis of paraffin-embedded human breast carcinoma tissue, using NDUFS6 Antibody. The picture on the right is blocked with the synthesized peptide.