

Anti-NDUFS1 antibody (590-670 C-Term) (STJ94382)

STJ94382

GENERAL INFORMATION

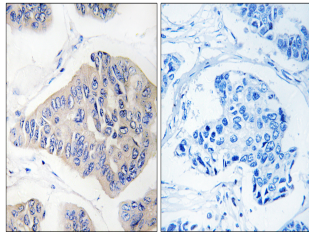
Product Type	Primary antibodies
Short Description	Rabbit polyclonal antibody anti-Nadh-Ubiquinone Oxidoreductase 75 Kda Subunit-Mitochondrial (590-670 C-Term) is suitable for use in Western Blot, Immunohistochemistry, Immunofluorescence and ELISA research applications.
Applications	WB, IHC-P, IF-P, ELISA
Host/Source	Rabbit
Reactivity	Human, Mouse, Rat

PRODUCT PROPERTIES

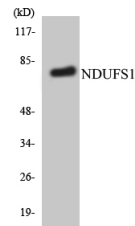
Clonality	Polyclonal
Clone ID	
Concentration	1 mg/mL
Conjugation	Unconjugated
Purification	The antibody was affinity-purified from rabbit anti-serum by affinity-chromatography.
Dilution Range	WB 1:500-1:2000 IHC 1:100-1:300 ELISA 1:40000
Formulation	PBS, 50% Glycerol, 0.5% BSA and 0.02% Sodium Azide.
Isotype	IgG
Storage Instruction	Store at -20°C for up to 1 year from the date of receipt, and avoid repeat freeze-thaw cycles.

TARGET INFORMATION

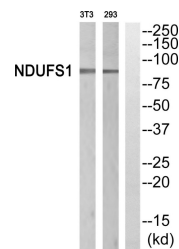
Gene ID	4719
Gene Symbol	NDUFS1
Uniprot ID	NDUS1_HUMAN
Immunogen	The antiserum was produced against synthesized peptide derived from human NDUFS1 at amino acid range 620-669
Immunogen Region	590-670 C-Term
Specificity	NDUFS1 polyclonal antibody (Nadh-Ubiquinone Oxidoreductase 75 Kda Subunit-Mitochondrial) binds to endogenous Nadh-Ubiquinone Oxidoreductase 75 Kda Subunit-Mitochondrial at the amino acid region 590-670 C-Term.
Immunogen Sequence	



Immunohistochemistry analysis of paraffin-embedded human breast carcinoma, using NDUFS1 Antibody. The lane on the right is blocked with the NDUFS1 peptide.



Western blot analysis of the lysates from HepG2 cells using NDUFS1 antibody.



Western blot analysis of NDUFS1 Antibody. The lane on the right is blocked with the NDUFS1 peptide.

This product is suitable for in-vitro studies under the RESEARCH USE ONLY [RUO] licence. This product must not be used as for diagnostic or other medical purposes.
St John's Laboratory Ltd, Knowledge Dock Business Centre, University Way, London, E16 2RD | Tel: 0208 223 3081