

Anti-NDUFC2 antibody (30-110 Internal) (STJ94381)

STJ94381

GENERAL INFORMATION

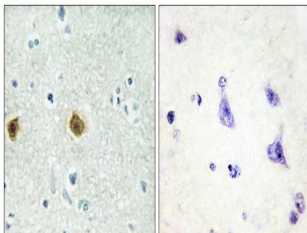
Product Type	Primary antibodies
Short Description	Rabbit polyclonal antibody anti-Nadh Dehydrogenase Ubiquinone 1 Subunit C2 (30-110 Internal) is suitable for use in Immunohistochemistry, Immunofluorescence and ELISA research applications.
Applications	IHC-P, IF-P, ELISA
Host/Source	Rabbit
Reactivity	Human, Rat

PRODUCT PROPERTIES

Clonality	Polyclonal
Clone ID	
Concentration	1 mg/mL
Conjugation	Unconjugated
Purification	The antibody was affinity-purified from rabbit anti-serum by affinity-chromatography.
Dilution	IHC 1:100-1:300
Range	ELISA 1:10000
Formulation	PBS, 50% Glycerol, 0.5% BSA and 0.02% Sodium Azide.
Isotype	IgG
Storage	Store at -20°C for up to 1 year from the date of receipt, and avoid repeat freeze-thaw cycles.
Instruction	

TARGET INFORMATION

Gene ID	4718
Gene Symbol	NDUFC2
Uniprot ID	NDUC2_HUMAN
Immunogen	The antiserum was produced against synthesized peptide derived from human NDUC2 at amino acid range 51-100
Immunogen Region	30-110 Internal
Specificity	NDUFC2 polyclonal antibody (Nadh Dehydrogenase Ubiquinone 1 Subunit C2) binds to endogenous Nadh Dehydrogenase Ubiquinone 1 Subunit C2 at the amino acid region 30-110 Internal.
Immunogen Sequence	



Immunohistochemistry analysis of paraffin-embedded human brain tissue, using NDUFC2 Antibody. The picture on the right is blocked with the synthesized peptide.

This product is suitable for in-vitro studies under the RESEARCH USE ONLY [RUO] licence. This product must not be used as for diagnostic or other medical purposes.
St John's Laboratory Ltd, Knowledge Dock Business Centre, University Way, London, E16 2RD | Tel: 0208 223 3081