

Anti-NDUFB9 antibody (80-160 Internal) (STJ94379)

STJ94379

GENERAL INFORMATION

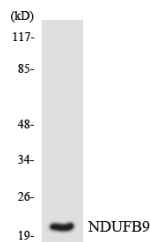
Product Type	Primary antibodies
Short Description	Rabbit polyclonal antibody anti-Nadh Dehydrogenase Ubiquinone 1 Beta Subcomplex Subunit 9 (80-160 Internal) is suitable for use in Western Blot, Immunohistochemistry, Immunofluorescence and ELISA research applications.
Applications	WB, IHC-P, IF-P, ELISA
Host/Source	Rabbit
Reactivity	Human, Rat, Mouse

PRODUCT PROPERTIES

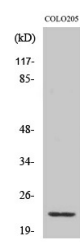
Clonality	Polyclonal
Clone ID	
Concentration	1 mg/mL
Conjugation	Unconjugated
Purification	The antibody was affinity-purified from rabbit anti-serum by affinity-chromatography.
Dilution Range	WB 1:500-1:2000 IHC 1:100-1:300 ELISA 1:10000
Formulation	PBS, 50% Glycerol, 0.5% BSA and 0.02% Sodium Azide.
Isotype	IgG
Storage Instruction	Store at -20°C for up to 1 year from the date of receipt, and avoid repeat freeze-thaw cycles.

TARGET INFORMATION

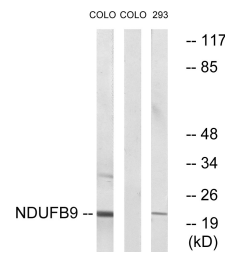
Gene ID	4715
Gene Symbol	NDUFB9
Uniprot ID	NDUB9_HUMAN
Immunogen Region	The antiserum was produced against synthesized peptide derived from human NDUFB9 at amino acid range 102-151 80-160 Internal
Specificity	NDUFB9 polyclonal antibody (Nadh Dehydrogenase Ubiquinone 1 Beta Subcomplex Subunit 9) binds to endogenous Nadh Dehydrogenase Ubiquinone 1 Beta Subcomplex Subunit 9 at the amino acid region 80-160 Internal.
Immunogen Sequence	



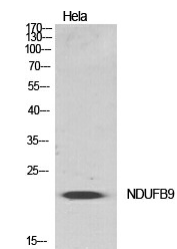
Western blot analysis of the lysates from COLO205 cells using NDUFB9 antibody.



Western blot analysis of 293 cells using NDUFB9 Polyclonal Antibody diluted at 1: 500



Western blot analysis of lysates from COLO205 cells and 293 cells, using NDUFB9 Antibody. The lane on the right is blocked with the synthesized peptide.



Western blot analysis of various cells using NDUFB9 Polyclonal Antibody diluted at 1: 500

This product is suitable for in-vitro studies under the RESEARCH USE ONLY [RUO] licence. This product must not be used as for diagnostic or other medical purposes.
St John's Laboratory Ltd, Knowledge Dock Business Centre, University Way, London, E16 2RD | Tel: 0208 223 3081