

Anti-NDUFB1 antibody (20-100 N-Term) (STJ94377)

STJ94377

GENERAL INFORMATION

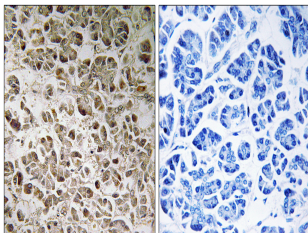
Product Type	Primary antibodies
Short Description	Rabbit polyclonal antibody anti-Nadh Dehydrogenase Ubiquinone 1 Beta Subcomplex Subunit 1 (20-100 N-Term) is suitable for use in Immunohistochemistry, Immunofluorescence and ELISA research applications.
Applications	IHC-P, IF-P, ELISA
Host/Source	Rabbit
Reactivity	Human, Rat, Mouse

PRODUCT PROPERTIES

Clonality	Polyclonal
Clone ID	
Concentration	1 mg/mL
Conjugation	Unconjugated
Purification	The antibody was affinity-purified from rabbit anti-serum by affinity-chromatography.
Dilution	IHC 1:100-1:300
Range	ELISA 1:20000
Formulation	PBS, 50% Glycerol, 0.5% BSA and 0.02% Sodium Azide.
Isotype	IgG
Storage	Store at -20°C for up to 1 year from the date of receipt, and avoid repeat freeze-thaw cycles.
Instruction	

TARGET INFORMATION

Gene ID	4707
Gene Symbol	NDUFB1
Uniprot ID	NDUB1_HUMAN
Immunogen	The antiserum was produced against synthesized peptide derived from human NDUFB1 at amino acid range 7-56
Immunogen Region	20-100 N-Term
Specificity	NDUFB1 polyclonal antibody (Nadh Dehydrogenase Ubiquinone 1 Beta Subcomplex Subunit 1) binds to endogenous Nadh Dehydrogenase Ubiquinone 1 Beta Subcomplex Subunit 1 at the amino acid region 20-100 N-Term.
Immunogen Sequence	



Immunohistochemistry analysis of paraffin-embedded human pancreas, using NDUFB1 Antibody. The picture on the right is blocked with the synthesized peptide.