

Anti-NDUFA8 antibody (80-160 Internal) (STJ94375)

STJ94375

GENERAL INFORMATION

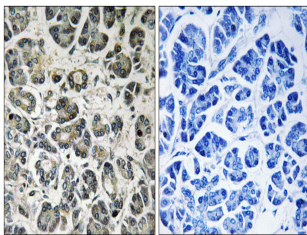
Product Type	Primary antibodies
Short Description	Rabbit polyclonal antibody anti-Nadh Dehydrogenase Ubiquinone 1 Alpha Subcomplex Subunit 8 (80-160 Internal) is suitable for use in Western Blot, Immunohistochemistry, Immunofluorescence and ELISA research applications.
Applications	WB, IHC-P, IF-P, ELISA
Host/Source	Rabbit
Reactivity	Human, Mouse

PRODUCT PROPERTIES

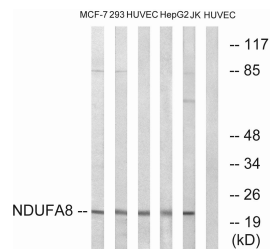
Clonality	Polyclonal
Clone ID	
Concentration	1 mg/mL
Conjugation	Unconjugated
Purification	The antibody was affinity-purified from rabbit anti-serum by affinity-chromatography.
Dilution Range	WB 1:500-1:2000 IHC 1:100-1:300 ELISA 1:40000
Formulation	PBS, 50% Glycerol, 0.5% BSA and 0.02% Sodium Azide.
Isotype	IgG
Storage Instruction	Store at -20°C for up to 1 year from the date of receipt, and avoid repeat freeze-thaw cycles.

TARGET INFORMATION

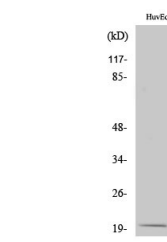
Gene ID	4702
Gene Symbol	NDUFA8
Uniprot ID	NDUA8_HUMAN
Immunogen Region	The antiserum was produced against synthesized peptide derived from human NDUFA8 at amino acid range 109-158 80-160 Internal
Specificity	NDUFA8 polyclonal antibody (Nadh Dehydrogenase Ubiquinone 1 Alpha Subcomplex Subunit 8) binds to endogenous Nadh Dehydrogenase Ubiquinone 1 Alpha Subcomplex Subunit 8 at the amino acid region 80-160 Internal.
Immunogen Sequence	



Immunohistochemistry analysis of paraffin-embedded human pancreas tissue, using NDUFA8 Antibody. The picture on the right is blocked with the synthesized peptide.



Western blot analysis of lysates from HUVEC, MCF-7, Jurkat, HepG2, and 293 cells, using NDUFA8 Antibody. The lane on the right is blocked with the synthesized peptide.



Western blot analysis of various cells using NDUFA8 Polyclonal Antibody diluted at 1: 1000

This product is suitable for in-vitro studies under the RESEARCH USE ONLY [RUO] licence. This product must not be used as for diagnostic or other medical purposes.
St John's Laboratory Ltd, Knowledge Dock Business Centre, University Way, London, E16 2RD | Tel: 0208 223 3081