

## Anti-NDUFA3 antibody (10-90 Internal) (STJ94372)

STJ94372

### GENERAL INFORMATION

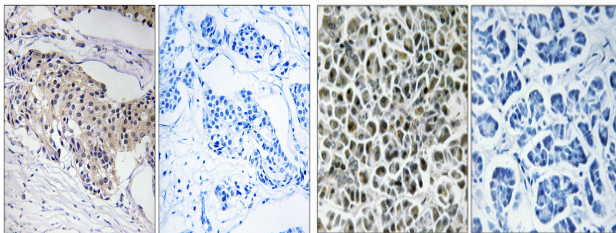
<b>Product Type</b>	Primary antibodies
<b>Short Description</b>	Rabbit polyclonal antibody anti-Nadh Dehydrogenase Ubiquinone 1 Alpha Subcomplex Subunit 3 (10-90 Internal) is suitable for use in Immunohistochemistry, Immunofluorescence and ELISA research applications.
<b>Applications</b>	IHC-P, IF-P, ELISA
<b>Host/Source</b>	Rabbit
<b>Reactivity</b>	Human, Mouse

### PRODUCT PROPERTIES

<b>Clonality</b>	Polyclonal
<b>Clone ID</b>	
<b>Concentration</b>	1 mg/mL
<b>Conjugation</b>	Unconjugated
<b>Purification</b>	The antibody was affinity-purified from rabbit anti-serum by affinity-chromatography.
<b>Dilution</b>	IHC 1:100-1:300
<b>Range</b>	ELISA 1:40000
<b>Formulation</b>	PBS, 50% Glycerol, 0.5% BSA and 0.02% Sodium Azide.
<b>Isotype</b>	IgG
<b>Storage</b>	Store at -20°C for up to 1 year from the date of receipt, and avoid repeat freeze-thaw cycles.
<b>Instruction</b>	

### TARGET INFORMATION

<b>Gene ID</b>	4696
<b>Gene Symbol</b>	NDUFA3
<b>Uniprot ID</b>	NDUA3_HUMAN
<b>Immunogen</b>	The antiserum was produced against synthesized peptide derived from human NDUFA3 at amino acid range 34-83
<b>Immunogen Region</b>	10-90 Internal
<b>Specificity</b>	NDUFA3 polyclonal antibody (Nadh Dehydrogenase Ubiquinone 1 Alpha Subcomplex Subunit 3) binds to endogenous Nadh Dehydrogenase Ubiquinone 1 Alpha Subcomplex Subunit 3 at the amino acid region 10-90 Internal.
<b>Immunogen Sequence</b>	



Immunohistochemistry analysis of paraffin-embedded human breast carcinoma tissue, using NDUFA3 Antibody. The picture on the right is blocked with the synthesized peptide.

Immunohistochemical analysis of paraffin-embedded Human pancreas. Antibody was diluted at 1:100 (4°C overnight). High-pressure and temperature Tris-EDTA, pH8.0 was used for antigen retrieval. Negative control (right) obtained from antibody was pre-absorbed by immunogen peptide.

This product is suitable for in-vitro studies under the RESEARCH USE ONLY [RUO] licence. This product must not be used as for diagnostic or other medical purposes.  
 St John's Laboratory Ltd, Knowledge Dock Business Centre, University Way, London, E16 2RD | Tel: 0208 223 3081