

Anti-NDRG4 antibody (160-240 Internal) (STJ94371)

STJ94371

GENERAL INFORMATION

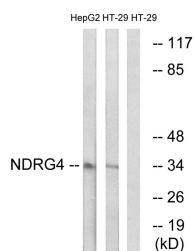
Product Type	Primary antibodies
Short Description	Rabbit polyclonal antibody anti-Protein NdrG4 (160-240 Internal) is suitable for use in Western Blot, Immunohistochemistry, Immunofluorescence and ELISA research applications.
Applications	WB, IHC-P, IF-P, ELISA
Host/Source	Rabbit
Reactivity	Human, Mouse, Rat

PRODUCT PROPERTIES

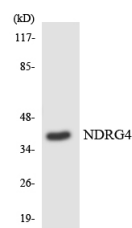
Clonality	Polyclonal
Clone ID	
Concentration	1 mg/mL
Conjugation	Unconjugated
Purification	The antibody was affinity-purified from rabbit anti-serum by affinity-chromatography.
Dilution Range	WB 1:500-1:2000 IHC 1:100-1:300 ELISA 1:40000
Formulation	PBS, 50% Glycerol, 0.5% BSA and 0.02% Sodium Azide.
Isotype	IgG
Storage Instruction	Store at -20°C for up to 1 year from the date of receipt, and avoid repeat freeze-thaw cycles.

TARGET INFORMATION

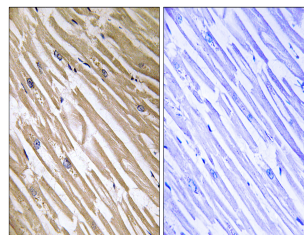
Gene ID	65009
Gene Symbol	NDRG4
Uniprot ID	NDRG4_HUMAN
Immunogen Region	The antiserum was produced against synthesized peptide derived from human NDRG4 at amino acid range 187-236
Immunogen Region	160-240 Internal
Specificity	NDRG4 polyclonal antibody (Protein NdrG4) binds to endogenous Protein NdrG4 at the amino acid region 160-240 Internal.
Immunogen Sequence	



Western blot analysis of lysates from HT-29 and HepG2 cells, using NDRG4 Antibody. The lane on the right is blocked with the synthesized peptide.



Western blot analysis of the lysates from K562 cells using NDRG4 antibody.



Immunohistochemistry analysis of paraffin-embedded human heart tissue, using NDRG4 Antibody. The picture on the right is blocked with the synthesized peptide.