

Anti-SLC8B1 antibody (470-550 C-Term) (STJ94360)

STJ94360

GENERAL INFORMATION

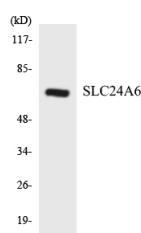
| | |
|--------------------------|--|
| Product Type | Primary antibodies |
| Short Description | Rabbit polyclonal antibody anti-Mitochondrial Sodium/Calcium Exchanger Protein (470-550 C-Term) is suitable for use in Western Blot, Immunohistochemistry, Immunofluorescence and ELISA research applications. |
| Applications | WB, IHC-P, IF-P, ELISA |
| Host/Source | Rabbit |
| Reactivity | Human, Rat, Mouse |

PRODUCT PROPERTIES

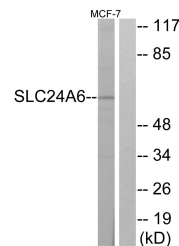
| | |
|----------------------|---|
| Clonality | Polyclonal |
| Clone ID | |
| Concentration | 1 mg/mL |
| Conjugation | Unconjugated |
| Purification | The antibody was affinity-purified from rabbit anti-serum by affinity-chromatography. |
| Dilution | WB 1:500-1:2000 |
| Range | ELISA 1:20000 |
| Formulation | PBS, 50% Glycerol, 0.5% BSA and 0.02% Sodium Azide. |
| Isotype | IgG |
| Storage | Store at 20°C for up to 1 year from the date of receipt, and avoid repeat freeze-thaw cycles. |
| Instruction | |

TARGET INFORMATION

| | |
|---------------------------|---|
| Gene ID | 80024 |
| Gene Symbol | SLC8B1 |
| Uniprot ID | NCLX_HUMAN |
| Immunogen | The antiserum was produced against synthesized peptide derived from human SLC24A6 at amino acid range 494-543 |
| Immunogen Region | 470-550 C-Term |
| Specificity | SLC8B1 polyclonal antibody (Mitochondrial Sodium/Calcium Exchanger Protein) binds to endogenous Mitochondrial Sodium/Calcium Exchanger Protein at the amino acid region 470-550 C-Term. |
| Immunogen Sequence | |



Western blot analysis of the lysates from HeLa cells using SLC24A6 antibody.



Western blot analysis of lysates from MCF-7 cells, using SLC24A6 Antibody. The lane on the right is blocked with the synthesized peptide.

This product is suitable for in-vitro studies under the RESEARCH USE ONLY [RUO] licence. This product must not be used as for diagnostic or other medical purposes.
 St John's Laboratory Ltd, Knowledge Dock Business Centre, University Way, London, E16 2RD | Tel: 0208 223 3081