

Anti-SLC24A1 antibody (130-210 Internal) (STJ94357)

STJ94357

GENERAL INFORMATION

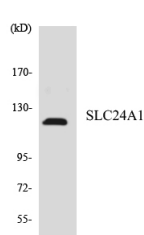
Product Type	Primary antibodies
Short Description	Rabbit polyclonal antibody anti-Sodium/Potassium/Calcium Exchanger 1 (130-210 Internal) is suitable for use in Western Blot and ELISA research applications.
Applications	WB, ELISA
Host/Source	Rabbit
Reactivity	Human, Rat, Mouse

PRODUCT PROPERTIES

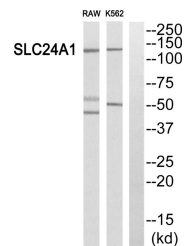
Clonality	Polyclonal
Clone ID	
Concentration	1 mg/mL
Conjugation	Unconjugated
Purification	The antibody was affinity-purified from rabbit anti-serum by affinity-chromatography.
Dilution Range	WB 1:500-1:2000 ELISA 1:10000
Formulation	PBS, 50% Glycerol, 0.5% BSA and 0.02% Sodium Azide.
Isotype	IgG
Storage	Store at -20°C for up to 1 year from the date of receipt, and avoid repeat freeze-thaw cycles.
Instruction	

TARGET INFORMATION

Gene ID	9187
Gene Symbol	SLC24A1
Uniprot ID	NCKX1_HUMAN
Immunogen	The antiserum was produced against synthesized peptide derived from human SLC24A1 at amino acid range 154-203
Immunogen Region	130-210 Internal
Specificity	SLC24A1 polyclonal antibody (Sodium/Potassium/Calcium Exchanger 1) binds to endogenous Sodium/Potassium/Calcium Exchanger 1 at the amino acid region 130-210 Internal.
Immunogen Sequence	



Western blot analysis of the lysates from HepG2 cells using SLC24A1 antibody.



Western blot analysis of SLC24A1 Antibody. The lane on the right is blocked with the SLC24A1 peptide.

This product is suitable for in-vitro studies under the RESEARCH USE ONLY [RUO] licence. This product must not be used as for diagnostic or other medical purposes.
 St John's Laboratory Ltd, Knowledge Dock Business Centre, University Way, London, E16 2RD | Tel: 0208 223 3081